




# 2023 Annual Review

## NE2 – Navesink River

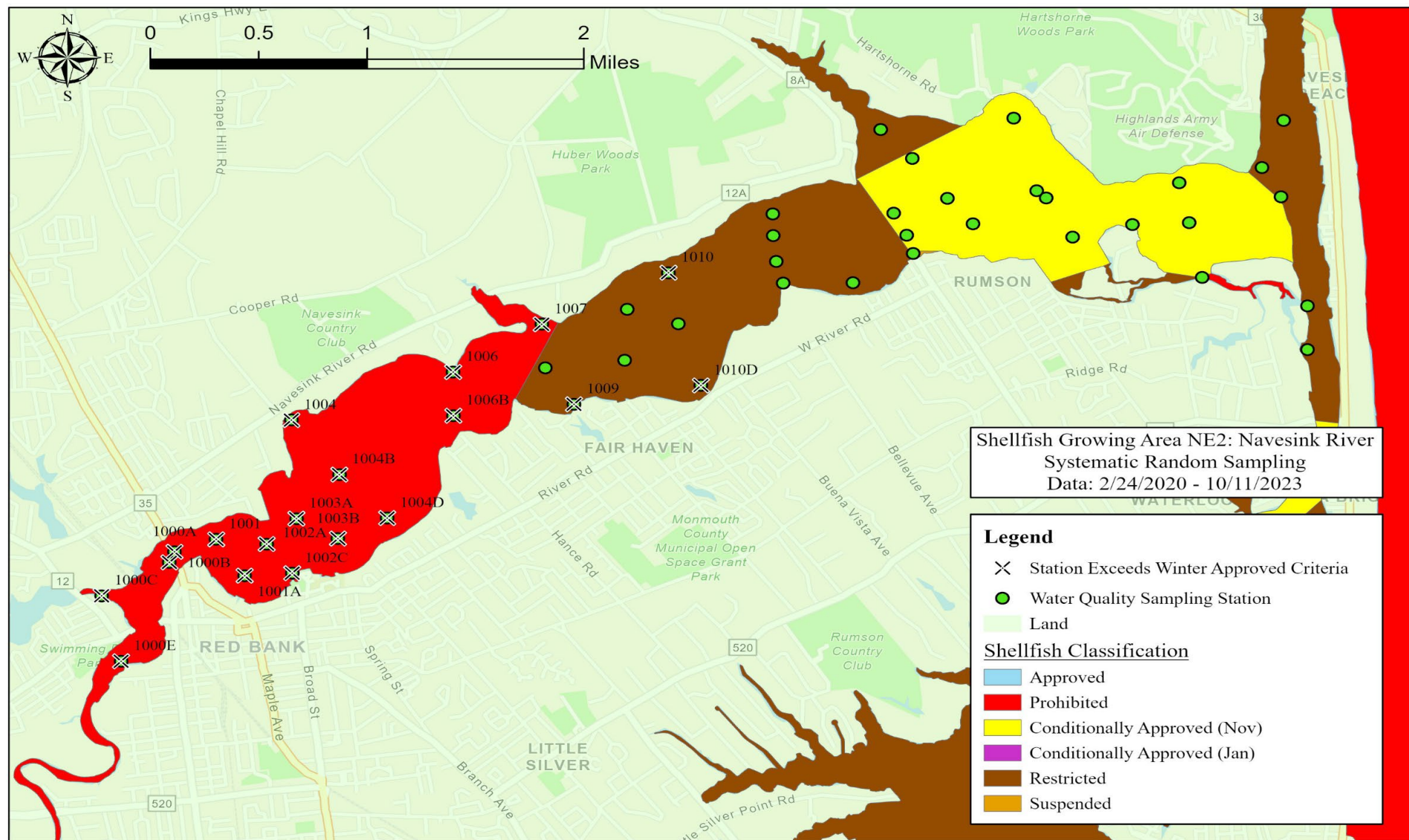
Data: February 24, 2020 – October 11, 2023

Celia R. Dahl  
Bureau of Marine Water Monitoring  
Division of Water Monitoring & Standards

# Presentation Summary



*The Navesink is meeting it's current classification and is still continuing to improve. NJDEP is adding 2 water quality monitoring stations to help determine a boundary to upgrade the Restricted waters west of the Oceanic Bridge to Conditionally Approved. NJDEP will also be removing the small suspension area around Station 1013C, since it I now meeting winter criteria. If the data continues to support the potential for upgrading a portion of Restricted waters to Conditional, it will be made effective at the next rule change.*

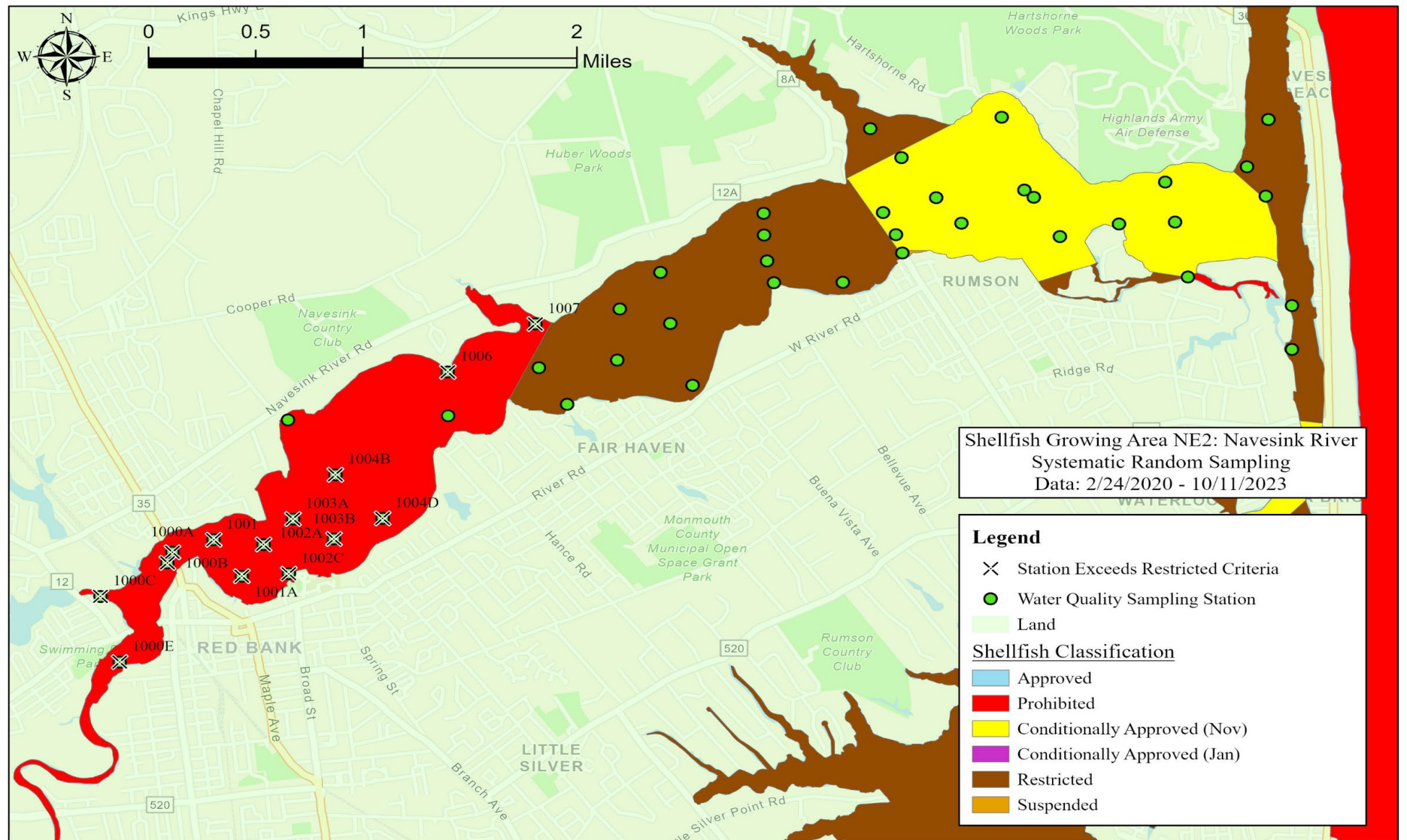


# Winter Approved Evaluation



NJ Department of Environmental Protection  
 Water Monitoring, Standards and Pesticide Control  
 Bureau of Marine Water Monitoring



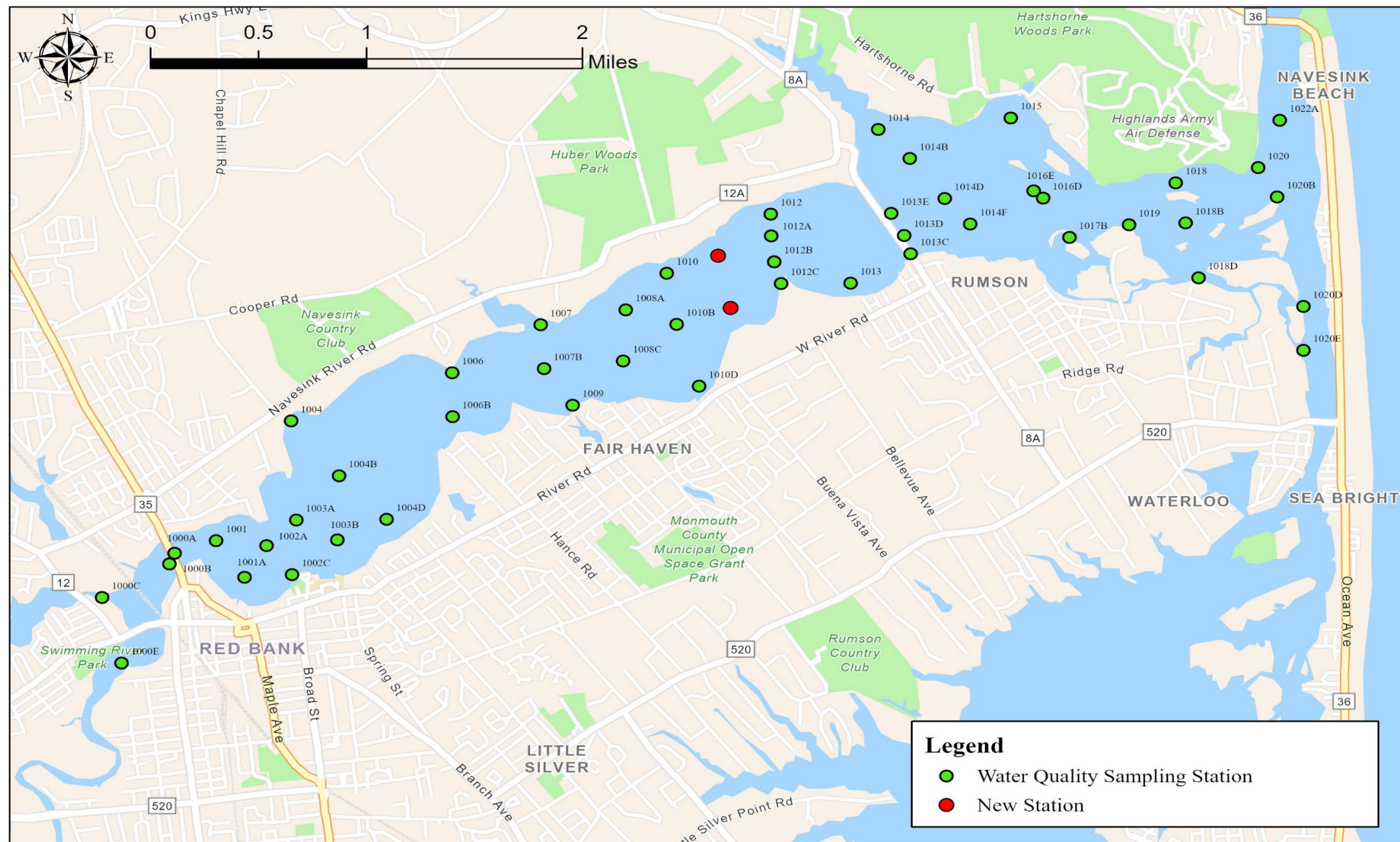


# Year-Round Restricted Evaluation



NJ Department of Environmental Protection  
 Water Monitoring, Standards and Pesticide Control  
 Bureau of Marine Water Monitoring





# Assignment 37 - Navesink River



NJ Department of Environmental Protection  
Water Monitoring, Standards and Pesticide Control  
Bureau of Marine Water Monitoring