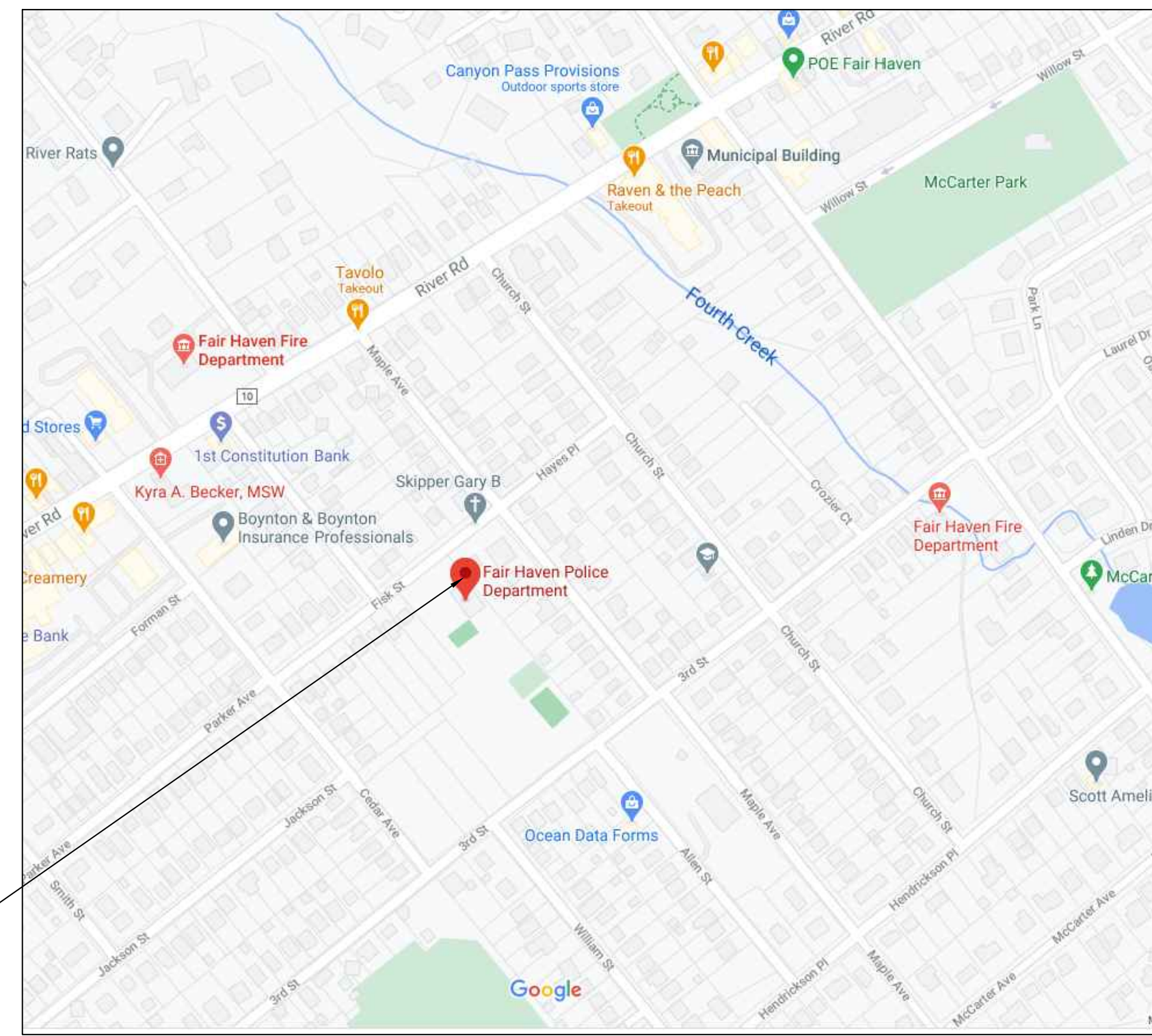


NEW FAIR HAVEN POLICE DEPARTMENT BUILDING
35 FISK STREET
BLOCK 39 & LOT 20.01
BOROUGH OF FAIR HAVEN
MONMOUTH COUNTY, NEW JERSEY

APPLICANT/OWNER: TOWNSHIP OF FAIR HAVEN
 748 RIVER ROAD
 FAIR HAVEN, NJ 07704
 Tel: (732) 747-0241

ENGINEER: FRANK H. LEHR ASSOCIATES
 101 SOUTH HARRISON STREET
 EAST ORANGE, NEW JERSEY 07018-1799
 TEL: (973) 673-2520
 FAX: (973) 673-6623



KEY PLAN

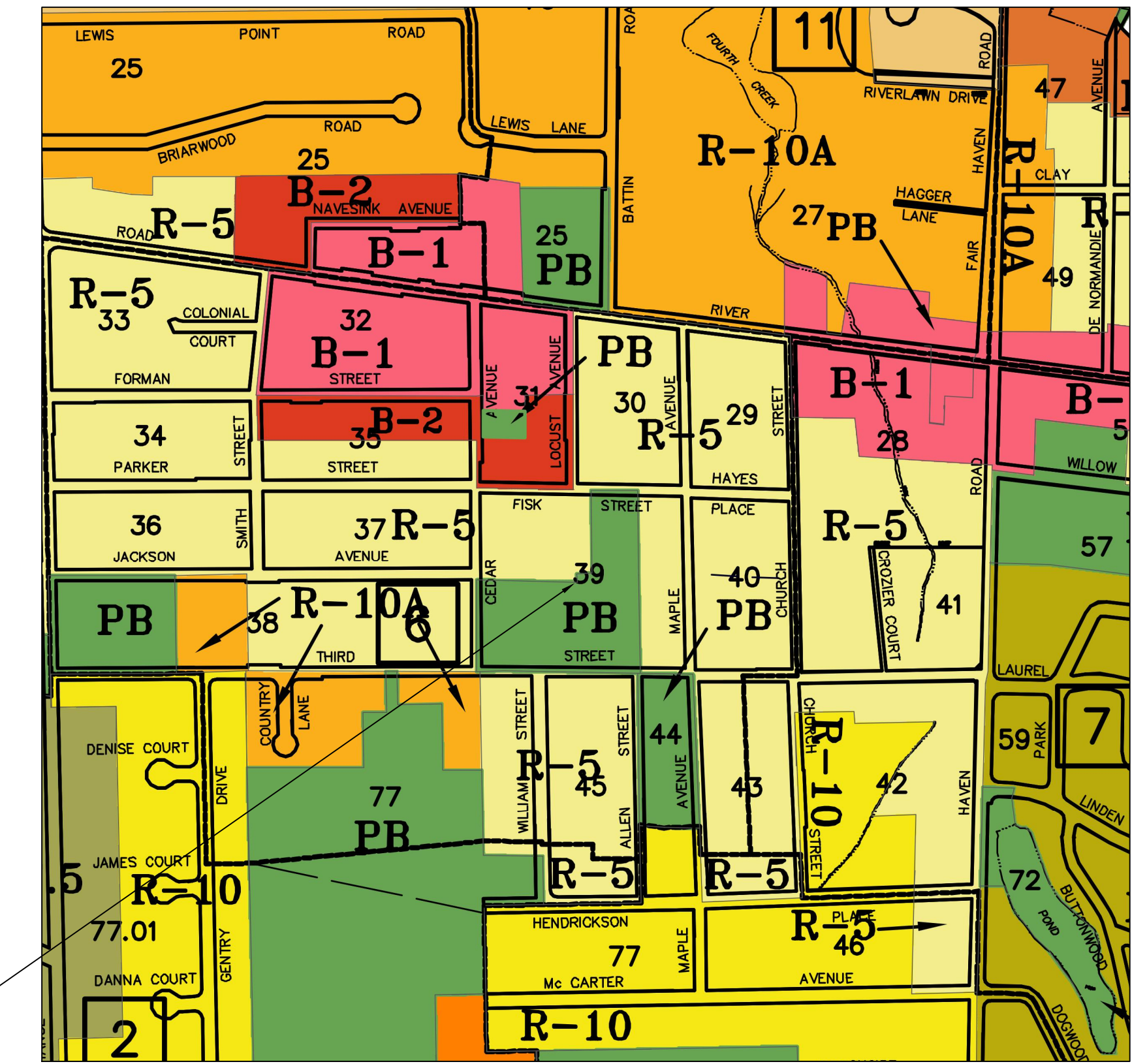
Borough of Fair Haven

Mayor
 Mayor Benjamin Lucarelli

Borough Council

- Councilman James Banahan
- Councilwoman Meghan Chrisner-Keefe
- Councilwoman Elizabeth Koch
- Councilman Michael McCue
- Councilwoman Laline Neff
- Councilman Christopher Rodriguez

Administrator
 Theresa S. Casagrande



ZONING MAP

ZONING TABLE

BOROUGH OF FAIR HAVEN			
PARCEL:	Block 39; Lot 20.01		
ZONE DISTRICT:	Public Use		
EXISTING USE:	Police Department Building		
PROPOSED USE:	Police Department Building		
REGULATION:			
USE:	Municipal Facilities	EXISTING Municipal Facility	PROPOSED Municipal Facility
LOT			
Area	N/A	29127.95F	29127.95F
Width	N/A	.67 AC	.67 AC
Depth	N/A	155.57 FT	155.57 FT
		N/A	161.84
YARD			
Front	N/A	68.3 FT	29.5 FT
Rear	N/A	58.84 FT*	
Side	N/A	8.24 FT	31.8 FT
IMPERVIOUS COVERAGE			
Lot Coverage	N/A	75.6%	82%
Building Coverage	N/A	14.1%	12.7%

PROJECT DESCRIPTION

Proposed construction of a new Police Department Building. Site will have 33 parking spaces. The site will also provide access to the park to the rear of the site. On site lighting will be dusk to dawn.

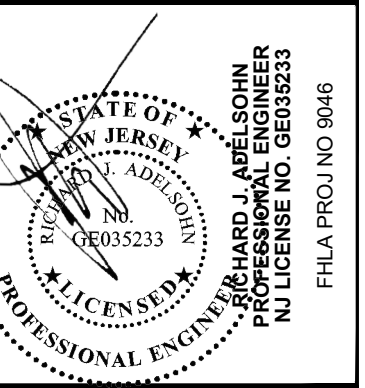
INDEX OF SHEETS

SHEET NO	DESCRIPTION
C-1	COVER SHEET
C-2	EXISTING CONDITIONS PLAN
C-3	SITE PLAN
C-4	GRADING PLAN
C-5	LIGHTING PLAN
L-1	LANDSCAPING PLAN

ALAN KLEIN, P.E., STRUCTURAL ENGINEER
 1041 WEST 22ND STREET, SUITE 200
 NEW BRUNSWICK, NJ 08901
 (732) 241-1111

OWENS, INC., MECHANICAL & ELECTRICAL ENGINEERS
 2500 ROUTE 108, SUITE 200
 FORT LEE, NJ 07024
 (201) 441-1200

FRANK H. LEHR ASSOCIATES, SITE/CIVIL/GEOTECHNICAL ENGINEER
 101 SOUTH HARRISON STREET
 EAST ORANGE, NJ 07018
 (973) 673-2520



THE GOLDSTEIN PARTNERSHIP
 ARCHITECTS

515 VALLEY STREET, SUITE 110, MAPLEWOOD, NJ 07040
 (973) 781-1450
 www.thegoldsteinpartnership.com

Copyright © 2021 by THE GOLDSTEIN PARTNERSHIP. All rights reserved.

NEW POLICE DEPARTMENT BUILDING
BOROUGH OF FAIR HAVEN

BLOCK 39 LOT 20.01
 35 FISK STREET
 FAIR HAVEN, NJ 07704

COVER SHEET

SCALE: AS NOTED
 DATE: 09/17/2021

DWAN, CWF
 CKC, EJA

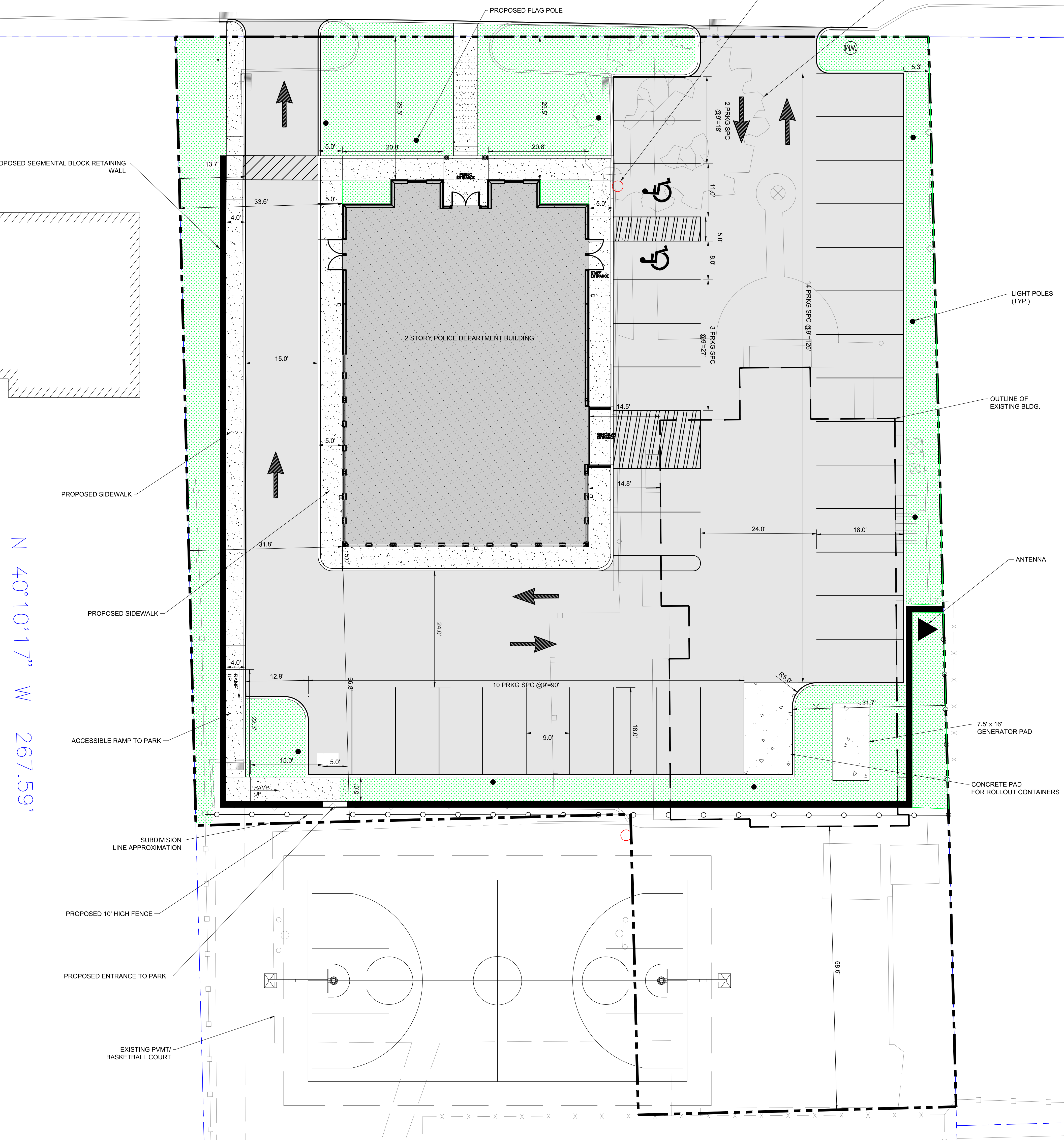
THIS DRAWING IS INCOMPLETE UNLESS USED WITH ALL OTHER CONTRACT DOCUMENTS.

DRAWING NUMBER
C-1

SHEET OF X

FIK STREET
(40' R.O.W.)

N 51°18'13" E 155.57'

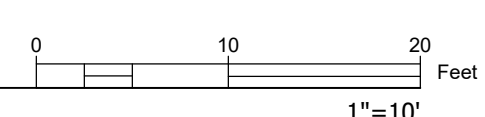


N 40°10'17" W 267.59'

FAIR HAVEN POLICE DEPARTMENT

	# OF SPACES
HC	2
STANDARD	31
TOTAL	33

1 SITE PLAN



ALAN KLEIN, P.E., STRUCTURAL ENGINEER
1041 WEST 22ND STREET, SUITE 200
FAIR HAVEN, NJ 07704
PHONE: 908.852.2200 FAX: 908.852.2202
WWW.AKENGINEERING.COM

OWEN, INC. MECHANICAL & ELECTRICAL ENGINEERS
21 WEST 14TH STREET, SUITE 200
FAIR HAVEN, NJ 07704
PHONE: 908.852.2200 FAX: 908.852.2202
WWW.OWENINC.COM

FRANK J. LEMMA ASSOCIATES, INC. CIVIL & ENVIRONMENTAL ENGINEERS
1000 WEST 14TH STREET, SUITE 200
FAIR HAVEN, NJ 07704
PHONE: 908.852.2200 FAX: 908.852.2202
WWW.FLEA.COM



THE GOLDSTEIN PARTNERSHIP
ARCHITECTS

515 VALLEY STREET, SUITE 110, MAPLEWOOD, NJ 07040
OFFICE: 973.781.4550
www.thegoldsteinpartnership.com
Copyright © 2021 by THE GOLDSTEIN PARTNERSHIP. All rights reserved.

NEW POLICE DEPARTMENT BUILDING
BOROUGH OF FAIR HAVEN

BLOCK: 39 LOT: 20.01
35 FISK STREET
FAIR HAVEN, NJ 07704

SITE PLAN

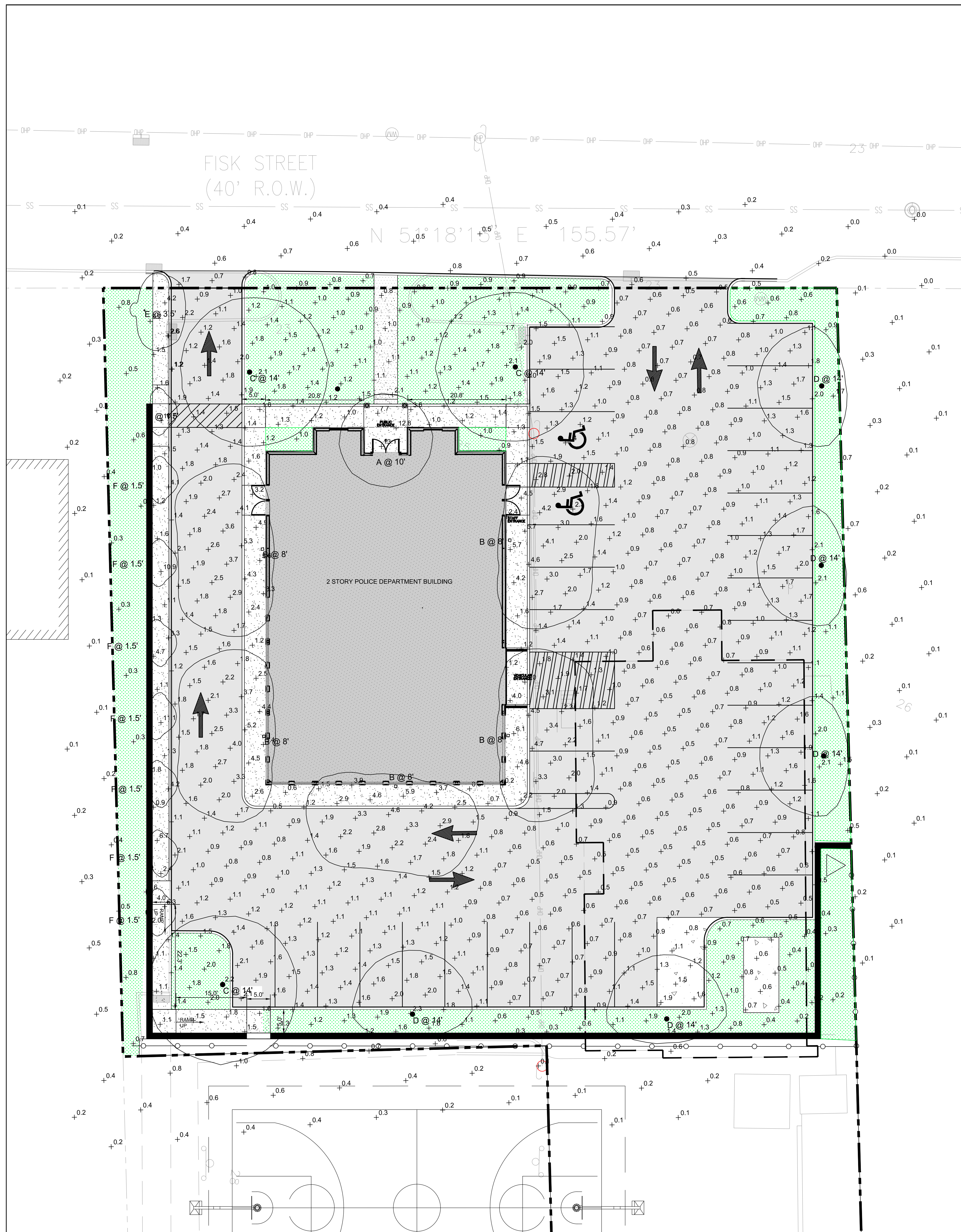
SCALE: AS NOTED
DATE: 02/17/2021

DVAN: GJF
CKG: EJA

THIS DRAWING IS
INCOMPLETE UNLESS
USED WITH ALL OTHER
CONTRACT DOCUMENTS.

DRAWING NUMBER
C-3

SHEET OF X



Symbol	Label	Image	QTY	Manufacturer	Catalog Number	Description	Lamp	Number Lamps	Filename	Lumen per Lamp	Lumen Multiplier	LLF	Wattage	Efficiency	Distrib. Pattern	Polar Plot	Notes
○	A		1	SIGNIFY LIGHTOLIER	CR9N+C6.25835A27U1+CRDCLC+VRVPWH	CALCULITE 6" ROUND LED DOWNLIGHT CLEAR FINISH WITH VANDAL-RESISTANT LENS	LED Lumens 1866	1	CR9N+C6.25835A27U1+CRDCLC+VRVPWH.ies	1866	1	1	21.2	100%			
□	B		5	COOPER LIGHTING SOLUTIONS - HULSE (FORMERLY EASTON)	ENT-SA1A-735-U-SL4-HS	ENTRI LED LUMINAIRE (1170 CRI, 3000K, 300mA LIGHTSQUARE WITH 16 LEDs AND TYPE IV SPILL LIGHT ILLUMINATOR OPTICS WITH HOUSE SIDE SHIELD)		16	ENT-SA1A-735-U-SL4-HS.ies	131	1	1	20.1	100%			
□	C		3	SIGNIFY CANADA LTD	P15-P-A02-730-TS5	Pureform Area Small 15" Square, 32 LEDs, 3000K CCT, TYPE T85 OPTIC.	(2) LED ARRAY(S) DRIVEN AT 520mA	1	p15-p-a02-730-TS5.ies	4044	1	1	26.6	100%			
□	D		5	SIGNIFY CANADA LTD	P15-P-A01-730-T45	Pureform Area Small 15" Square, 32 LEDs, 3000K CCT, TYPE T45 OPTIC.	(2) LED ARRAY(S) DRIVEN AT 200mA	1	p15-p-a01-730-T45.ies	2046	1	1	14.3	100%			
○	E		1	SIGNIFY GARDCO	PBL-14L-100-NW-Q2-3-UNV	Pureform Gen2 - PBL Bollard		1	pbl-14l-100-nw-q2-3-unv.ies	492	1	1	6.1	100%			
—	F		8	VISTA PROFESSIONAL OUTDOOR LIGHTING	1505	4-11/16" X 12-3/16" X 3-1/8" LED STEP LIGHT 8 COOL WHITE LEDS WITH 1" SPACING, CONCAVED ALUMINUM REFLECTOR WITH CLEAR GLASS LENS		1	1505.ies	542	1	1	15.96	100%			

Description	Symbol	Avg	Max	Min	Max/Min	Avg/Min
Calc. Zone #1	+	1.4 ft	13.1 ft	0.1 ft	131.0:1	14.0:1



A: CALCULITE 6" DOWNLIGHT



E: PUREFORM LED BOLLARD LIGHT



B: COOPER ENTRI LED LUMINAIRE



F: VISTA LED STEP LIGHT



C&D: PUREFORM SMALL AREA LIGHT

ALAN KLEIN, P.E., STRUCTURAL ENGINEER
 10101 ROCKY HILL ROAD, SUITE 200, ROCKY HILL, MD 20851
 (301) 440-8800
 OWENS & CORCORAN, INC., ELECTRICAL ENGINEERS
 2100 K STREET, N.W., SUITE 1000, WASHINGTON, DC 20004
 (202) 462-1000
 FRANK, LEMAS, ASSOCIATES, ELECTRICAL ENGINEERS
 10000 BELLEVILLE ROAD, SUITE 100, BELLEVILLE, OH 45311
 (513) 233-1000



THE GOLDSTEIN PARTNERSHIP
 ARCHITECTS
 515 VALLEY STREET, SUITE 110, MAPLEWOOD, NJ 07040
 (973) 781-4550
 www.thegoldsteinpartnership.com
 Copyright © 2021 by THE GOLDSTEIN PARTNERSHIP. ALL RIGHTS RESERVED.

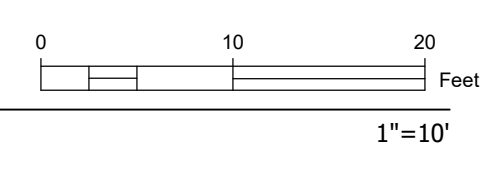
NEW POLICE DEPARTMENT BUILDING
BOROUGH OF FAIR HAVEN
 35 FRISK STREET
 FAIR HAVEN, NJ 07704

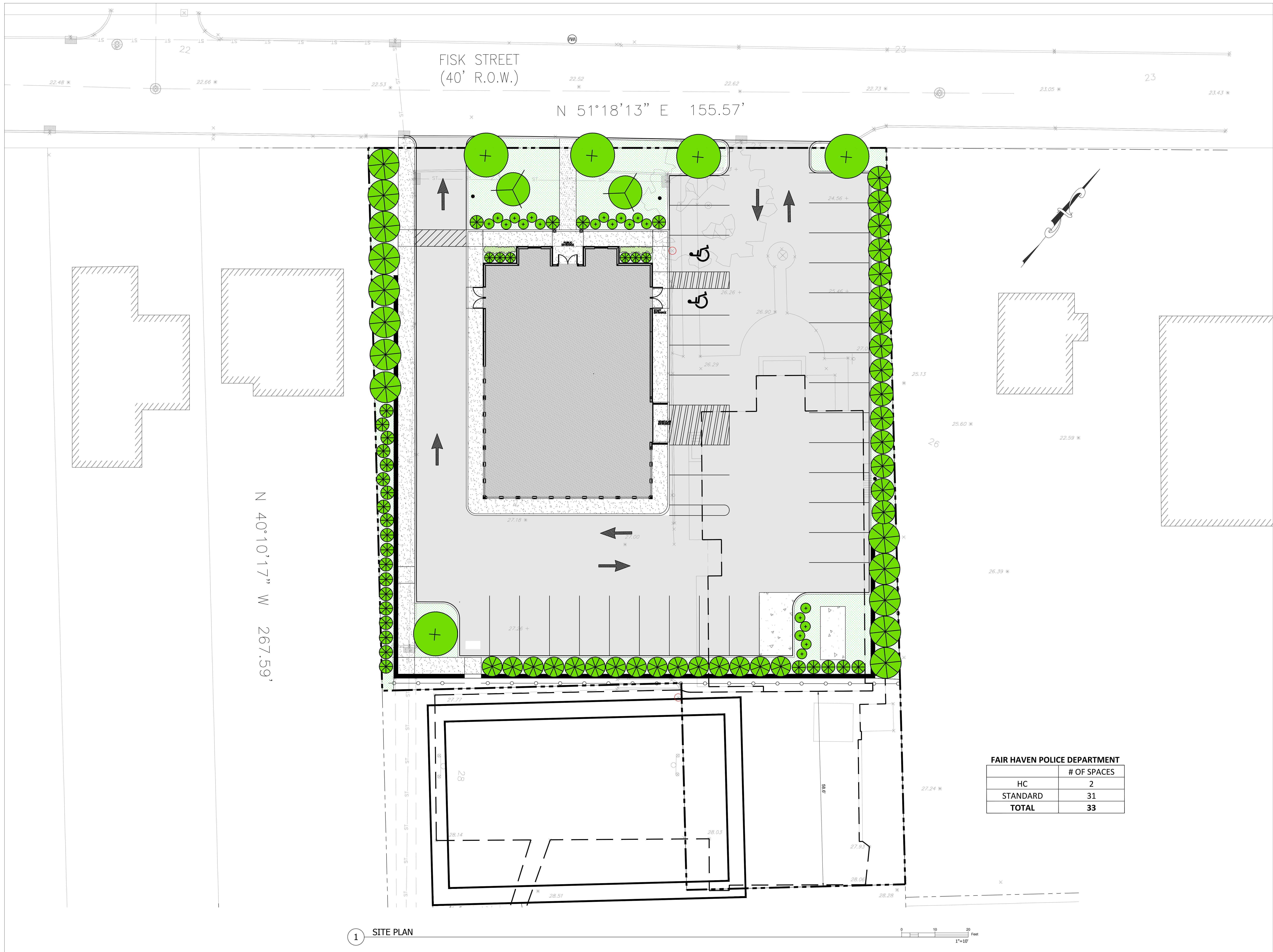
LIGHTING PLAN
 SCALE: AS NOTED
 DATE: 09/17/2021
 DWG: GAF
 CKD: FLA

THIS DRAWING IS INCOMPLETE UNLESS USED WITH ALL OTHER CONTRACT DOCUMENTS.

DRAWING NUMBER
C-5
 SHEET OF X

1 LIGHTING PLAN





1 SITE PLAN

FAIR HAVEN POLICE DEPARTMENT

	# OF SPACES
HC	2
STANDARD	31
TOTAL	33

ALLAN KLEIN, P.E. STRUCTURAL ENGINEER
 1040 N. 15TH STREET, SUITE 200
 FAIR HAVEN, NJ 07704
 (908) 853-0070
 ALLAN@ALLAN-KLEIN.COM

OMER, INC. MECHANICAL & ELECTRICAL ENGINEERS
 2500 N. 15TH STREET, SUITE 200
 FAIR HAVEN, NJ 07704
 (908) 853-0070
 OMER@OMER-INC.COM

FRANK H. LEWIS ASSOCIATES, SITE CIVIL & UTILITY ENGINEER
 100 SOUTH 1ST STREET, SUITE 200
 FAIR HAVEN, NJ 07704
 (908) 853-0070
 FRANK@FRANKLEWIS.COM

RICHARD J. LABELSON
 PROFESSIONAL ENGINEER
 IN THE STATE OF NEW JERSEY
 P.E. NO. 3496

THE GOLDSTEIN PARTNERSHIP
ARCHITECTS
 515 VALLEY STREET, SUITE 110, MAPLEWOOD, NJ 07040
 (908) 781-4450
 www.goldsteinpartnership.com
 copyright © 2021 BY THE GOLDSTEIN PARTNERSHIP. ALL RIGHTS RESERVED.

NEW POLICE DEPARTMENT BUILDING
BOROUGH OF FAIR HAVEN
 35 FISK STREET
 FAIR HAVEN, NJ 07704

LANDSCAPE PLAN
 SCALE: AS NOTED
 DATE: 02/17/2021
 DWN: GJF
 CKC: EJA

THIS DRAWING IS INCOMPLETE UNLESS USED WITH ALL OTHER CONTRACT DOCUMENTS.

DRAWING NUMBER
L-1
 SHEET OF X