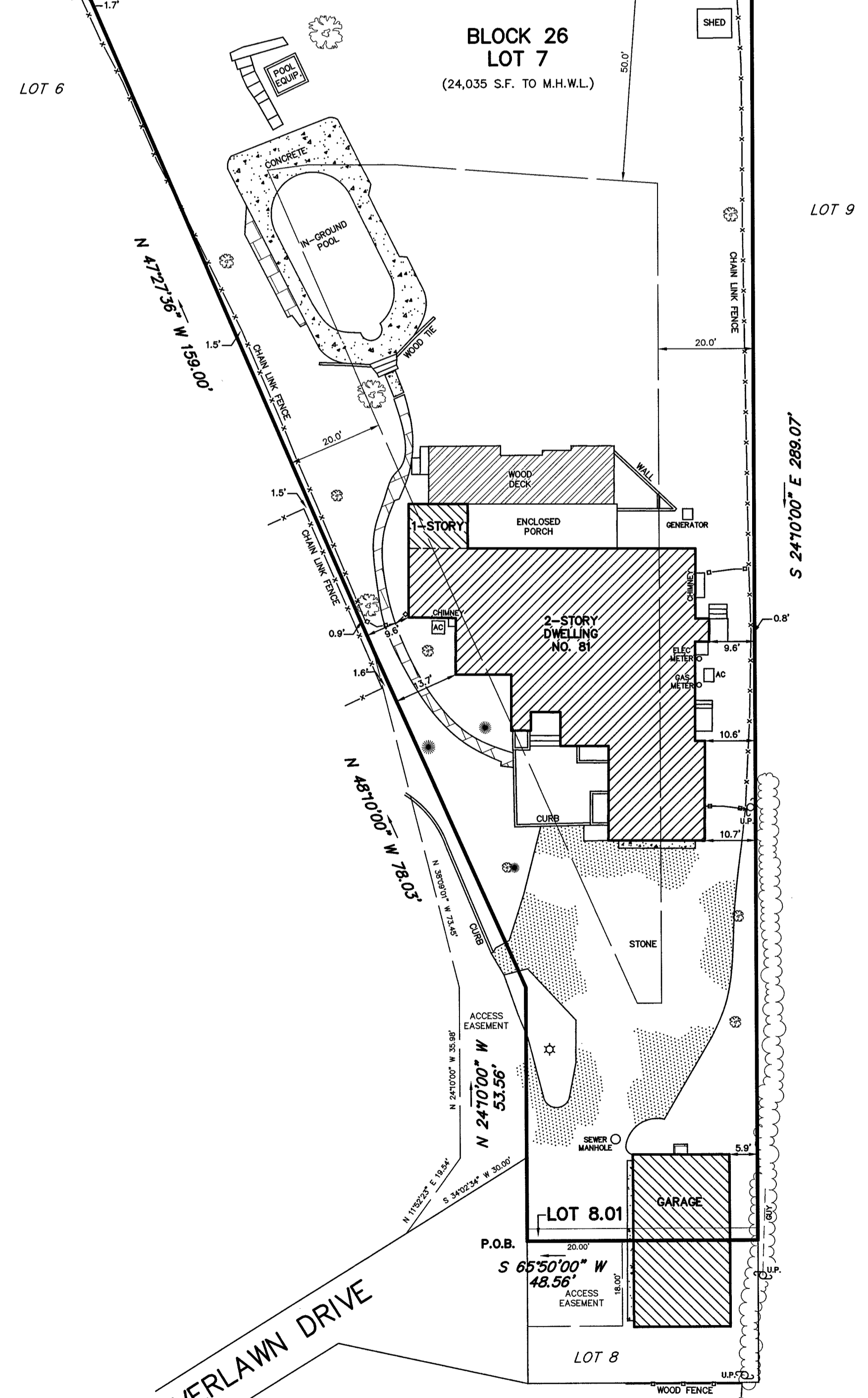
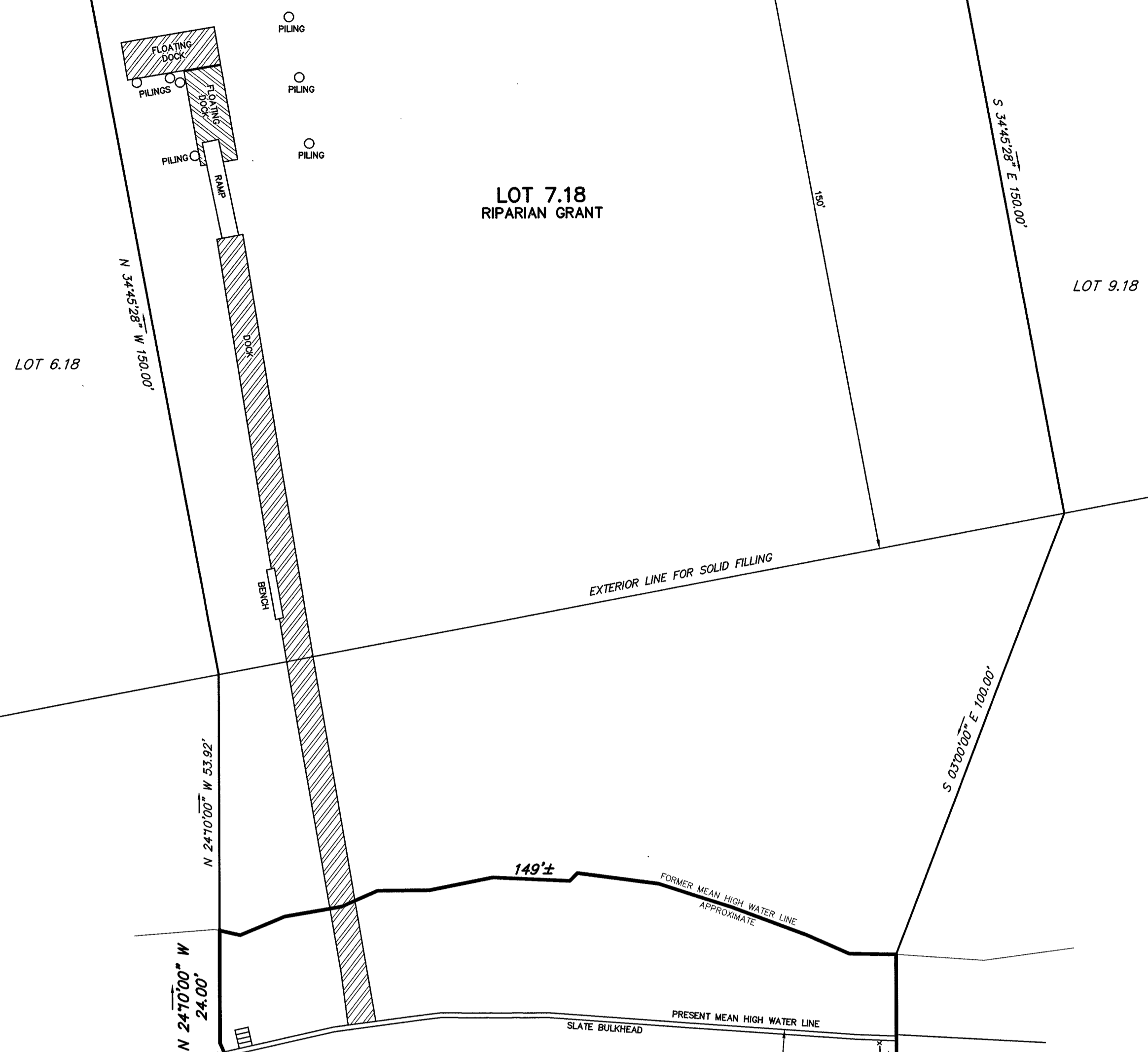
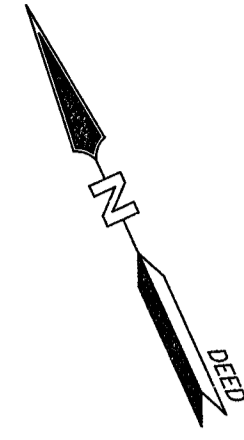
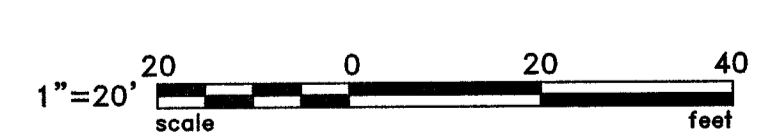


NAVESINK RIVER



RIVERLAWN DRIVE



NO.	DATE	DESCRIPTION
SURVEY OF PROPERTY		
81 RIVERLAWN DRIVE LOT 7 BLOCK 26		
BOROUGH OF FAIR HAVEN		MONMOUTH COUNTY
NEW JERSEY		
Charles Surmonte P.E. & P.L.S. New Jersey Professional Engineer and Land Surveyor License No. 35885		301 Main Street, 2nd Floor Allenhurst, New Jersey, 07711 Phone 732-660-0606 Fax 732-660-0404
PROJECT No.	DATE:	SCALE:
16-1483	12-16-16	1"=20'
SHEET:		1 OF 1