

This is an aerial map of the existing site showing its location within the neighborhood.

Please grab a post-it note and write down your ideas about the site, its interconnectedness with the neighborhood, and your vision for the police department and the community center.

What do you like about the existing site? What would you change? How can this site be improved?



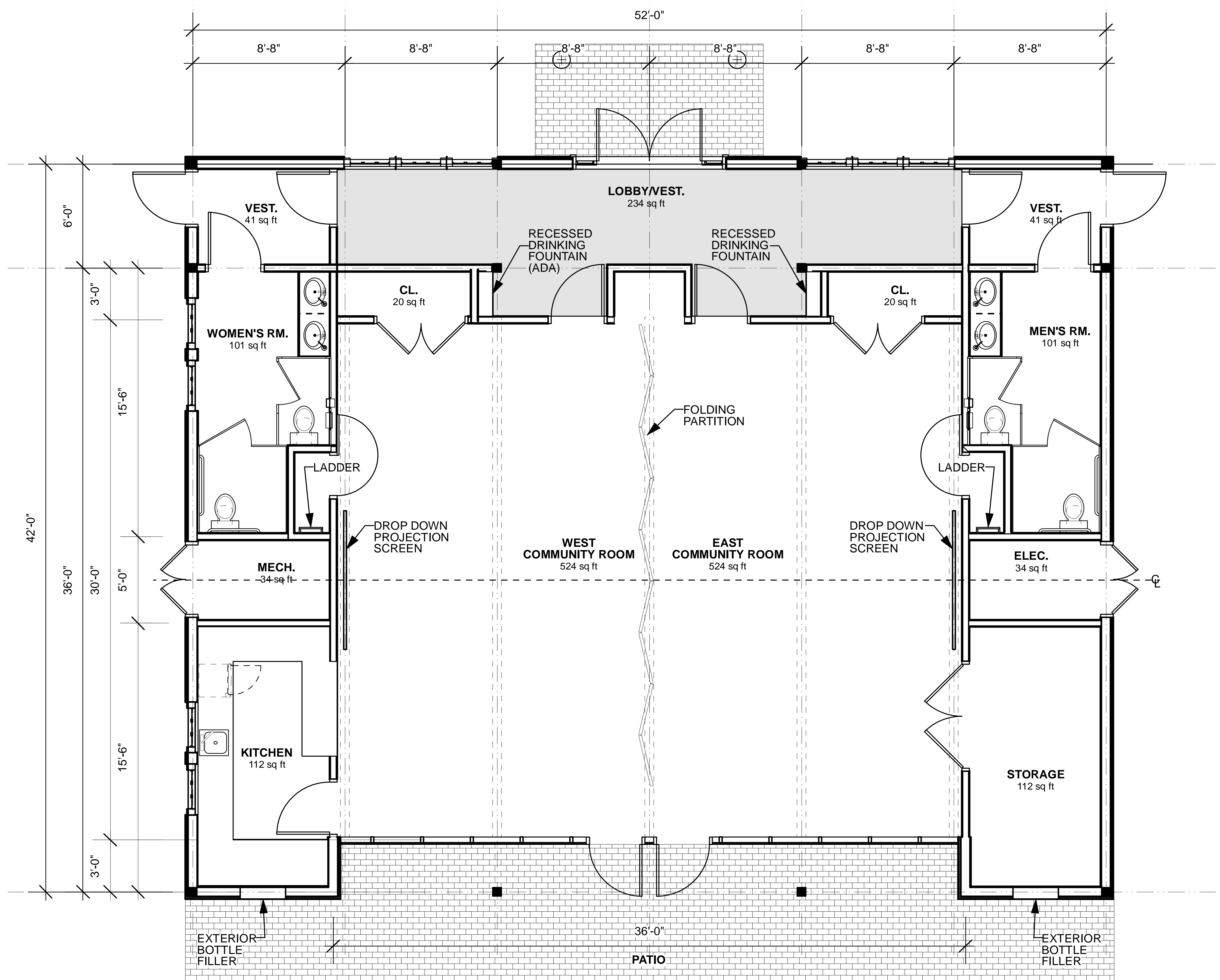
This is a conceptual sketch of the Community Center.

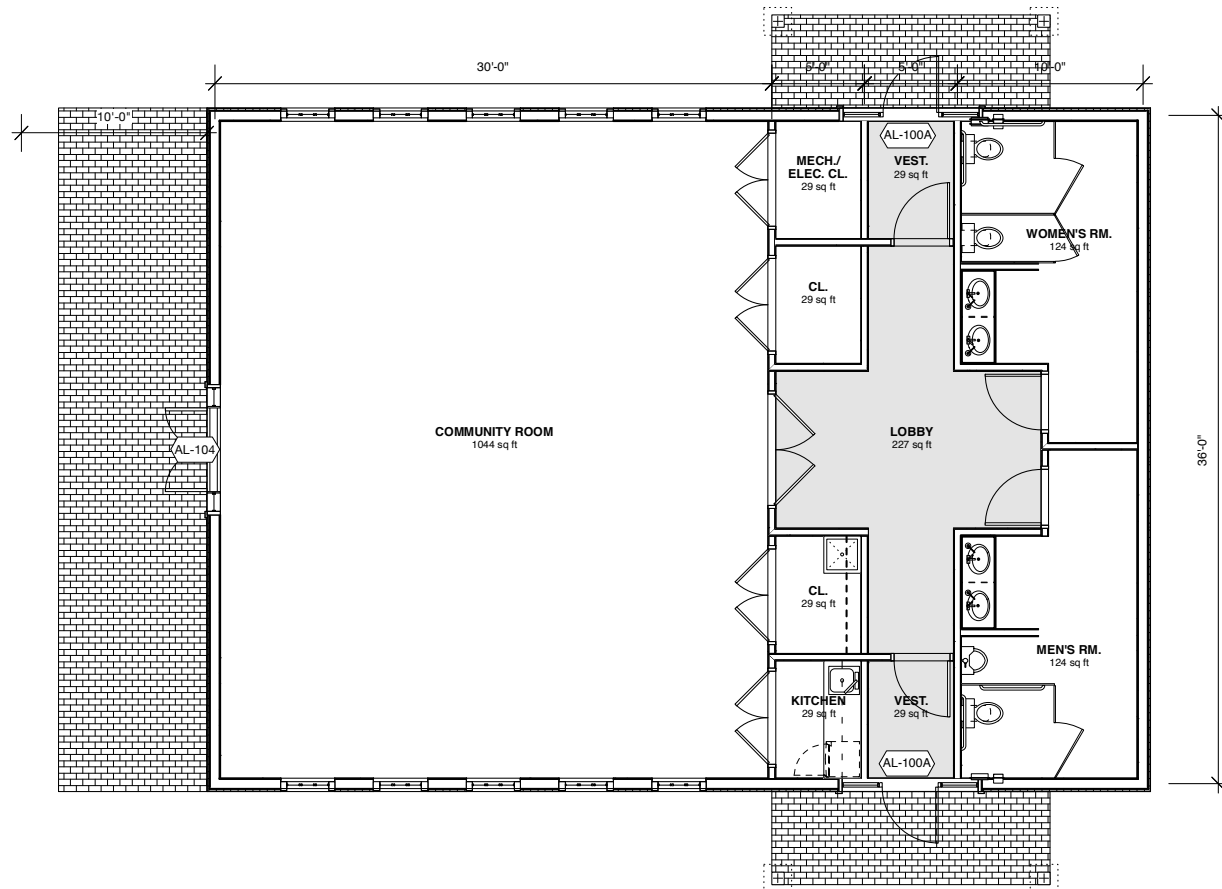
What amenities would you like to see in your community center?

What would you change? What would you add?

We want to hear about your vision for this space!

Please grab a post it, write down your ideas and add them to the poster!





2

COMMUNITY CENTER PLAN

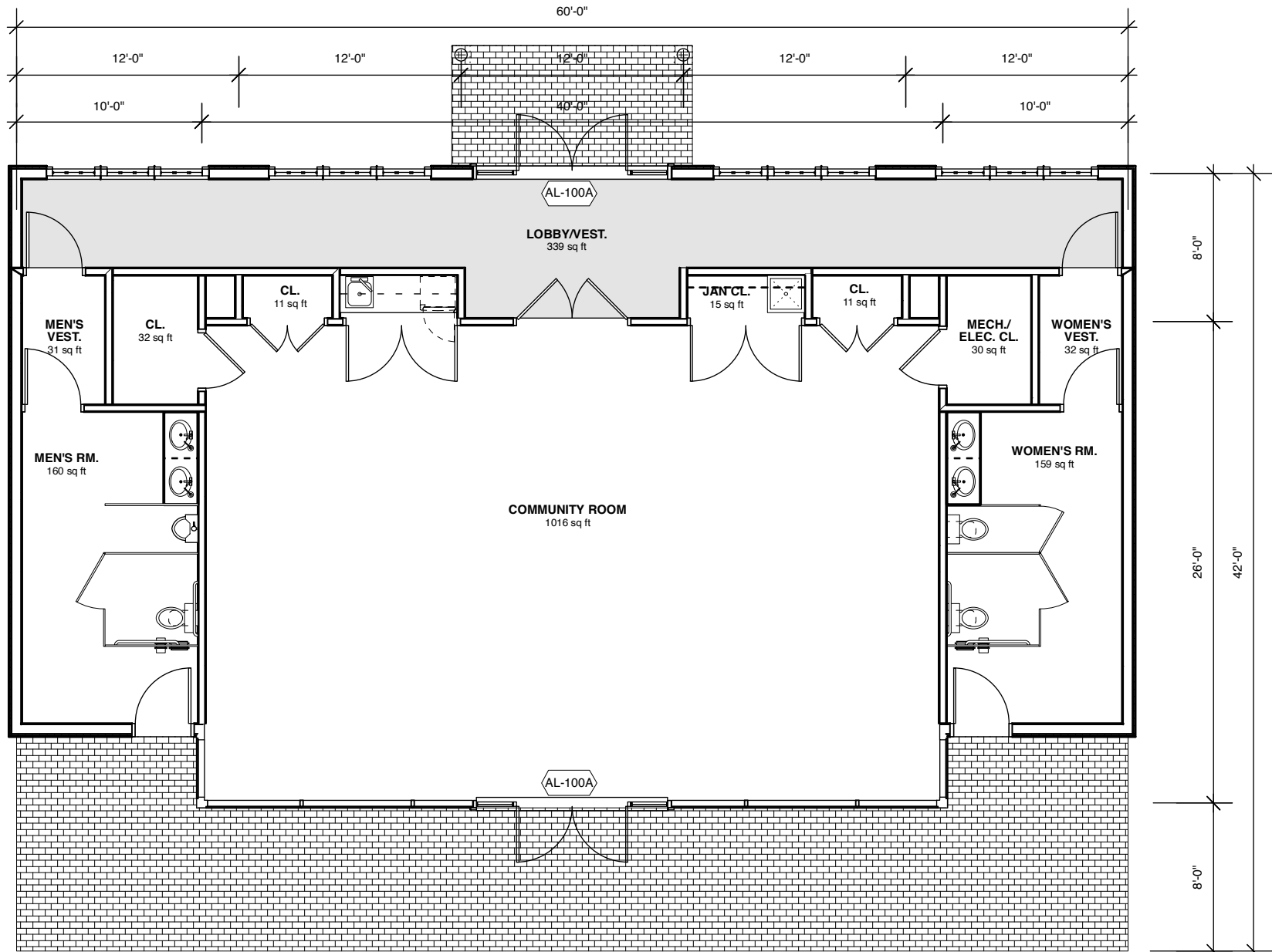
BUILDING TOTAL = 1,870 SF

**COMMUNITY CENTER
BOROUGH OF
FAIR HAVEN**
FAIR HAVEN, NJ 07704

02/02/23

COPYRIGHT © 2023 BY THE GOLDSTEIN PARTNERSHIP. ALL RIGHTS RESERVED.

Preliminary Floor Plan: Community Center



2

COMMUNITY CENTER PLAN

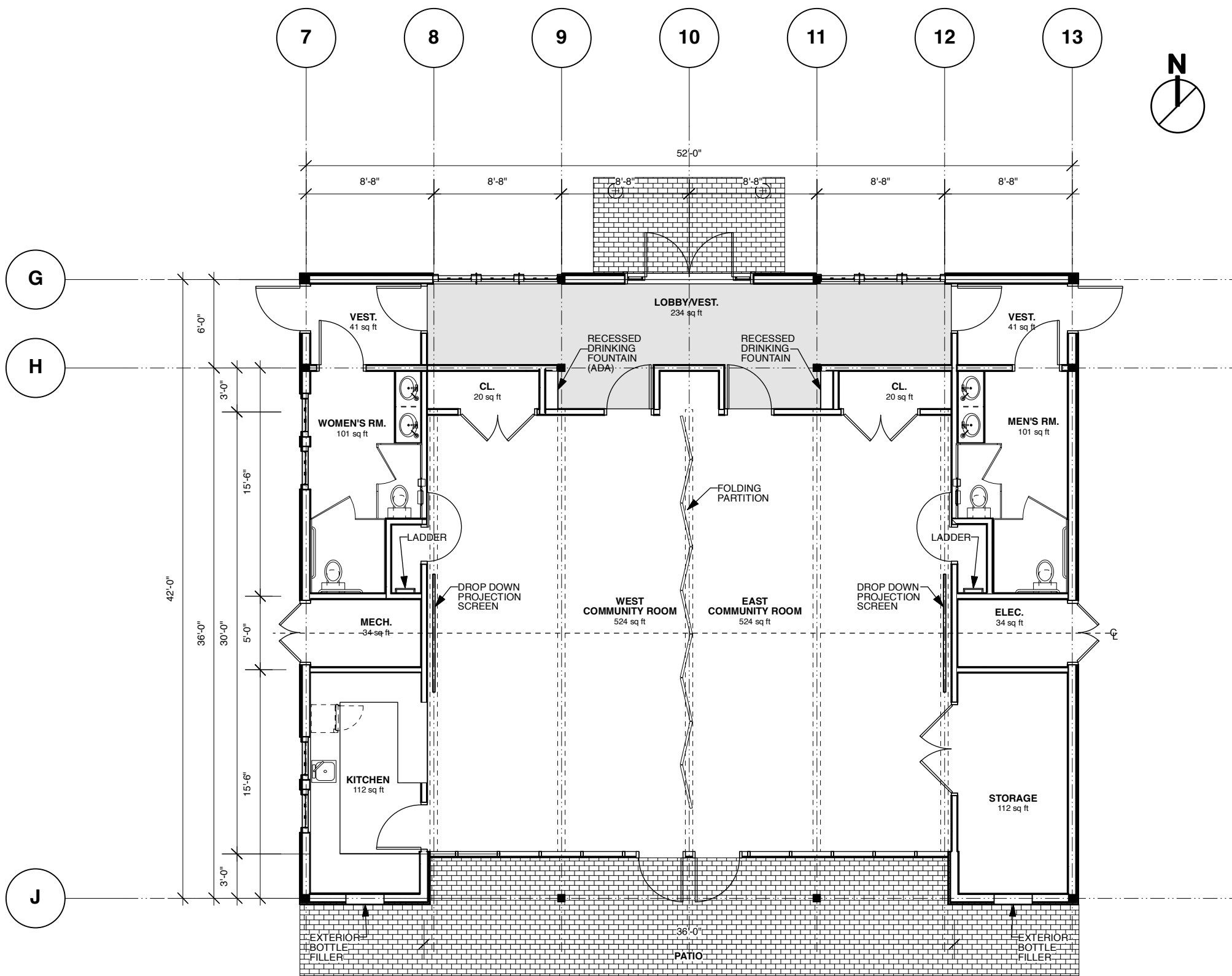
Scale: 1/8" = 1'-0"

BUILDING TOTAL = 2,030 SF

COMMUNITY CENTER
**BOROUGH OF
FAIR HAVEN**
FAIR HAVEN, NJ 07704

02/13/23

COPYRIGHT © 2023 BY THE GOLDSTEIN PARTNERSHIP. ALL RIGHTS RESERVED.



2

COMMUNITY CENTER PLAN

BUILDING TOTAL = 2,150 SF

Scale: 1/8" = 1'-0"

**COMMUNITY CENTER
BOROUGH OF
FAIR HAVEN**
FAIR HAVEN, NJ 07704

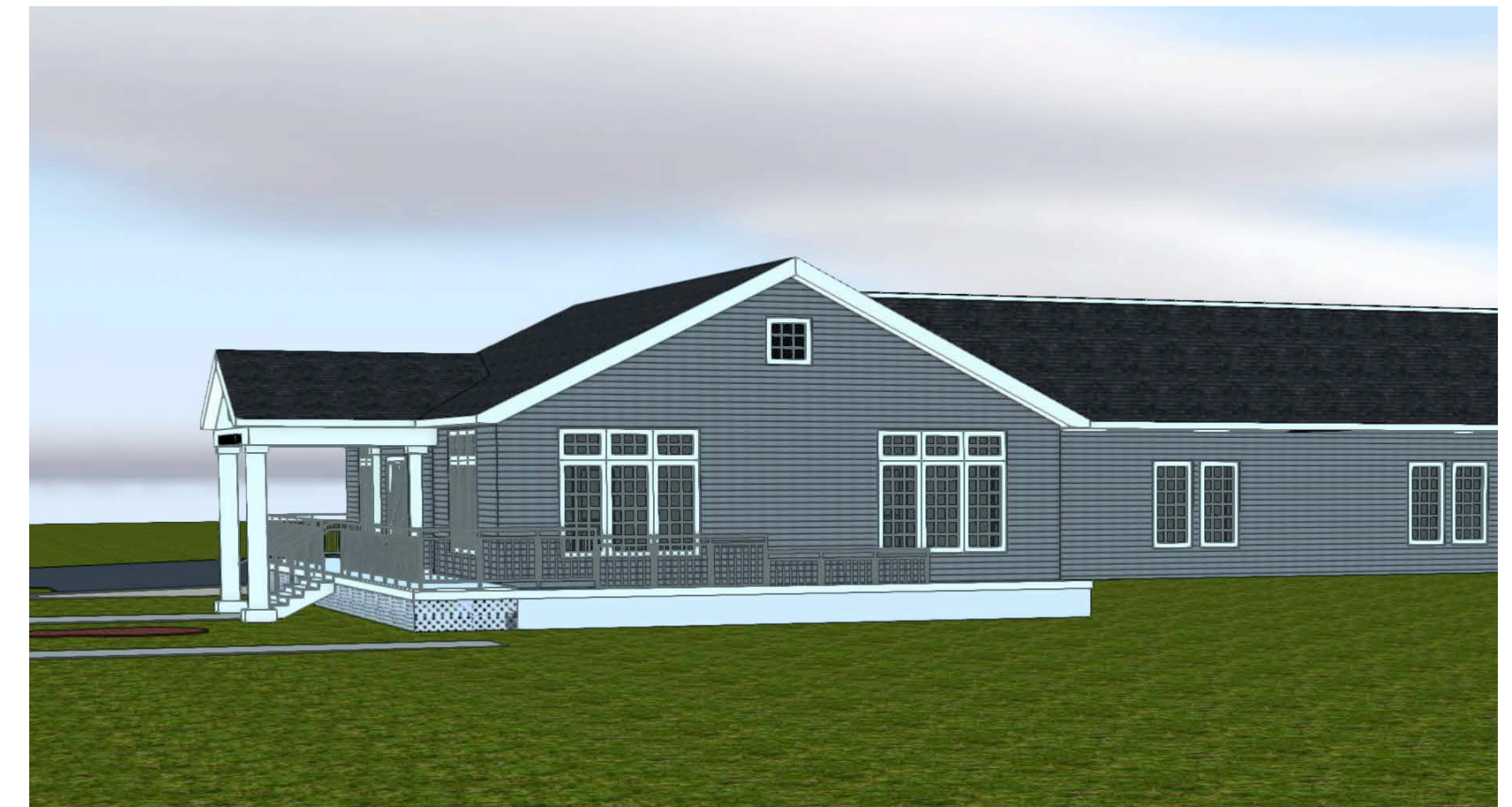
02/21/23

COPYRIGHT © 2023 BY THE GOLDSTEIN PARTNERSHIP. ALL RIGHTS RESERVED.

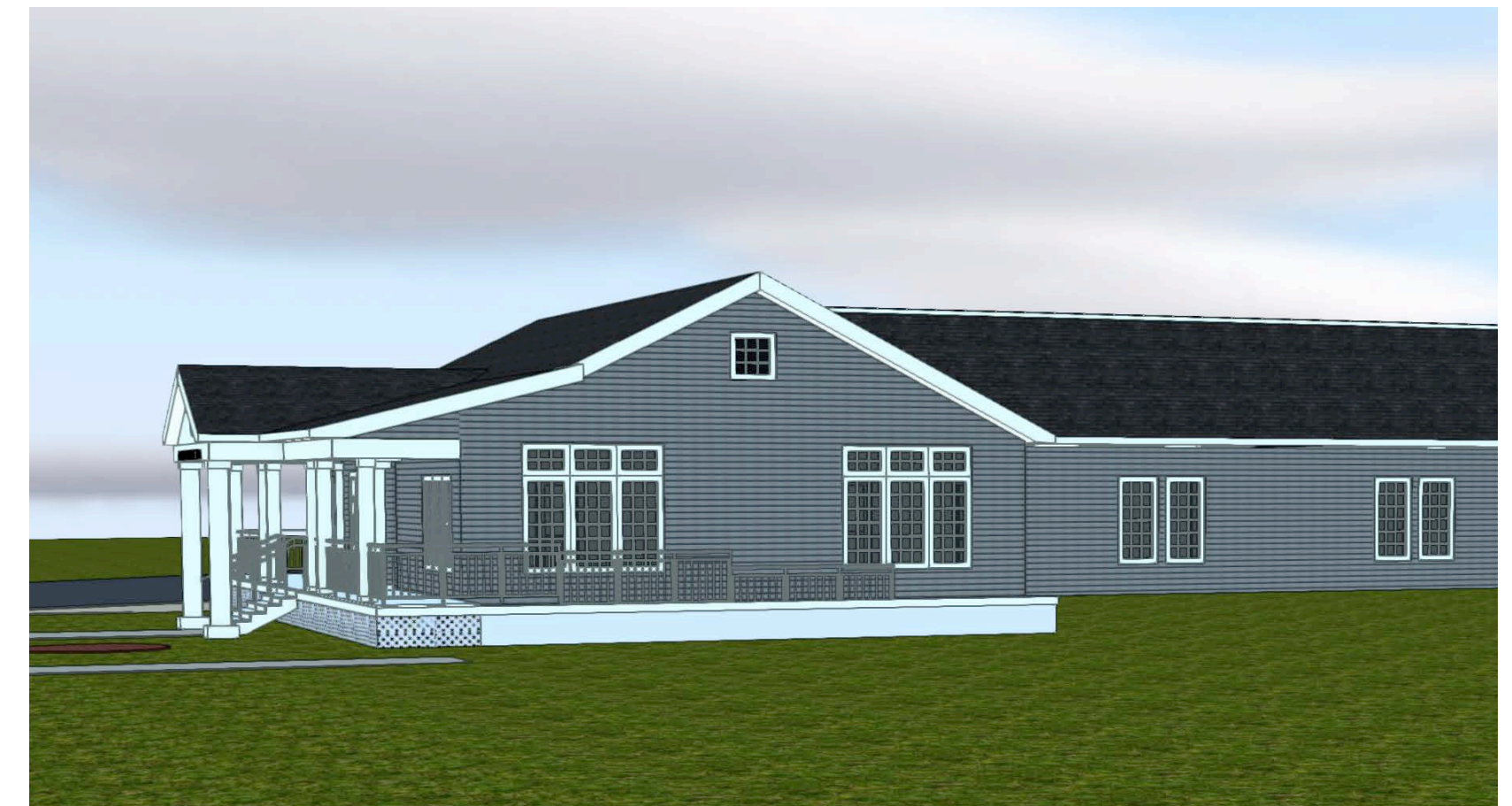
Architectural Design of the Police Department Building and the Community Center.

Put a yellow dot under the option you like best and red dot under option you prefer least.

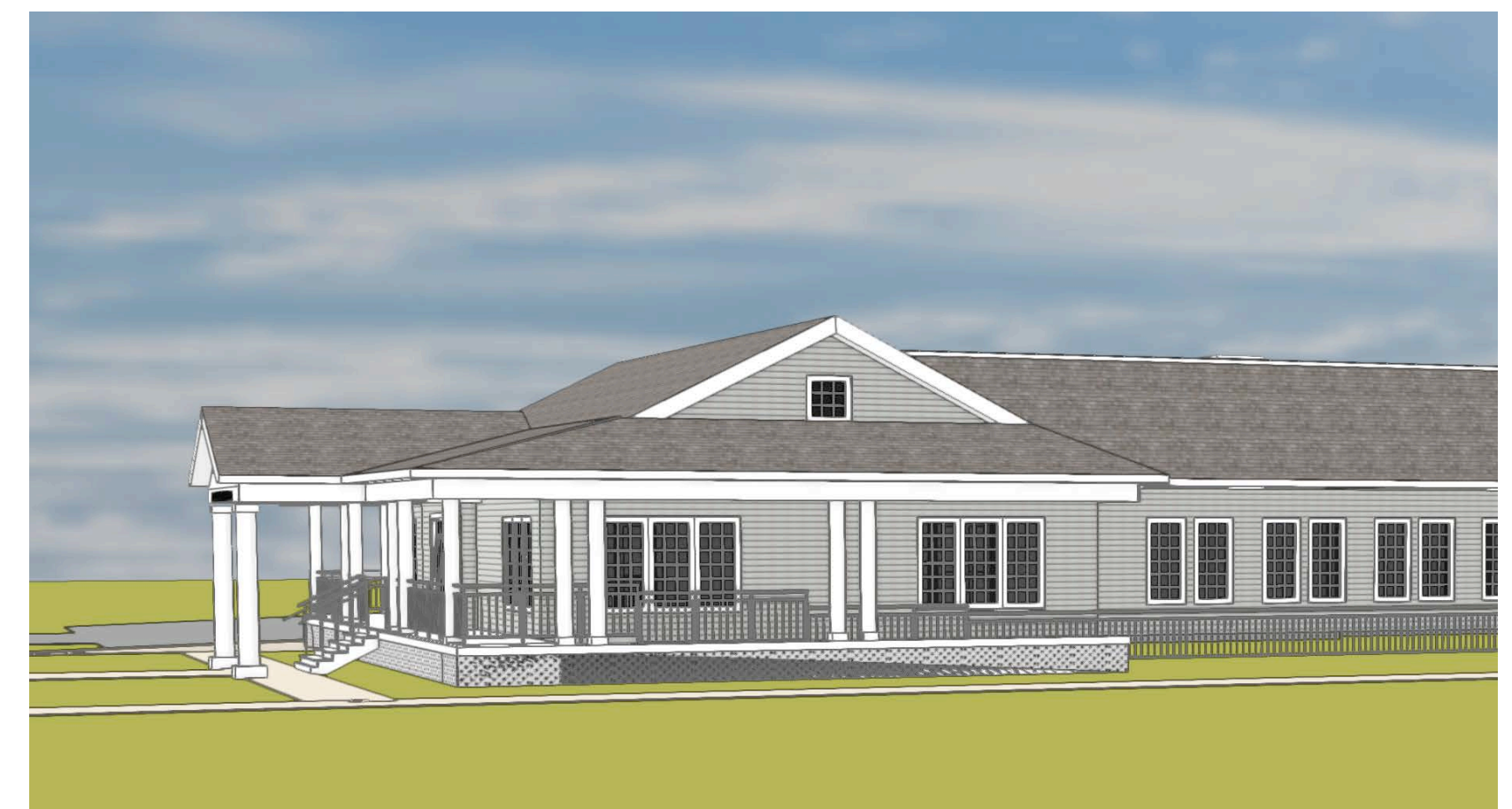
A
Covered
Entrance



B
Covered
Porch



C
Wrap-
Around
Porch



**Building
Material**

Put a
yellow dot
on the one
you like
best.



Clapboard



Brick