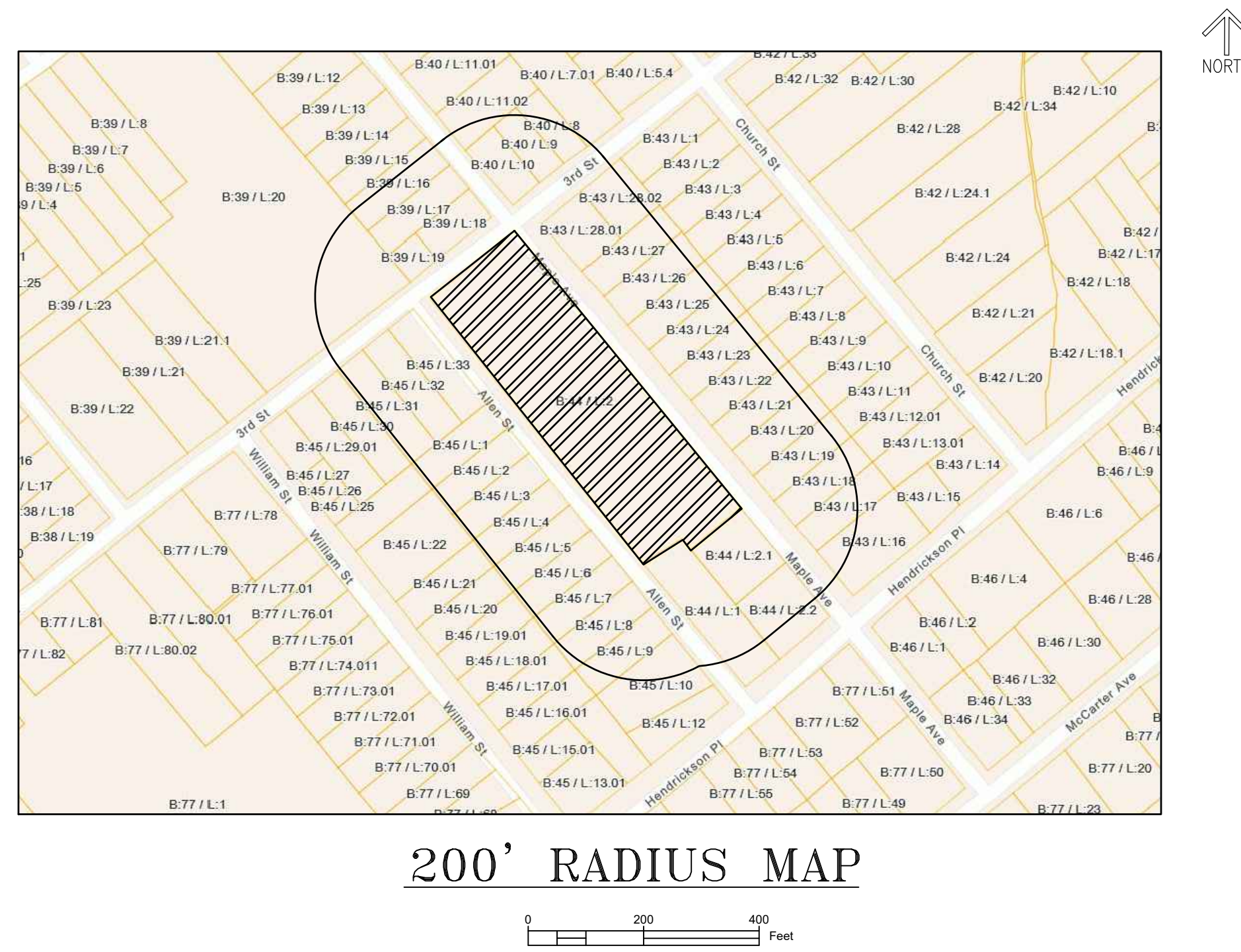


**FAIR HAVEN
DEPARTMENT OF
PUBLIC WORKS BUILDING
1 Allen Street
BLOCK 44 & LOT 2
BOROUGH OF FAIR HAVEN
MONMOUTH COUNTY, NEW JERSEY**



Borough of Fair Haven

Mayor

Mayor Benjamin Lucarelli

Borough Council

Councilman James Banahan

Councilwoman Meghan Chrisner-Keefe

Councilwoman Elizabeth Koch

Councilman Michael McCue

Councilwoman Laline Neff

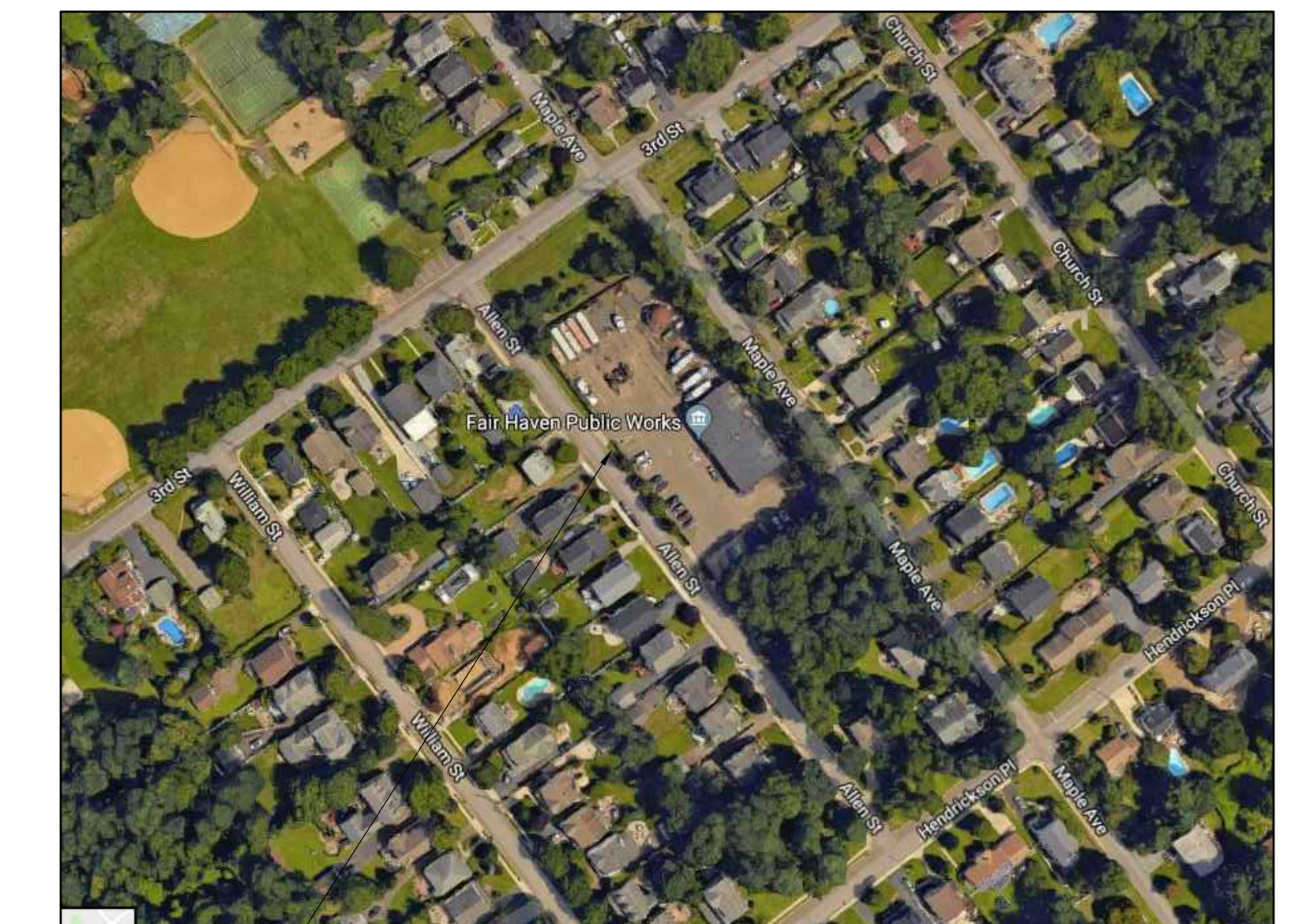
Councilman Christopher Rodriguez

Administrator

Theresa S. Casagrande



ZONING MAP
SCALE: N.T.S.



LOCATION PLAN
SCALE: N.T.S.

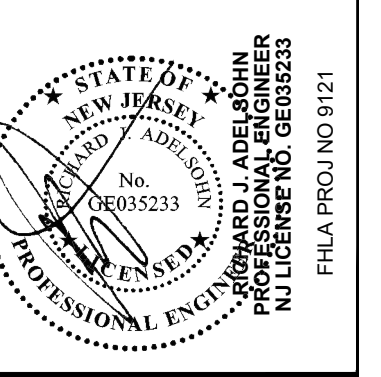
PROJECT DESCRIPTION

Proposed construction of a new Department of Public Works Building and Yard for the Borough. Site will have 30 public parking spaces to the north of the building. The Yard will have a new salt dome, new fueling station, and storage space for all of the Public Works equipment and storage space for the Office of Emergency Management. On site lighting will be dusk to dawn.

INDEX OF SHEETS

- C-1 COVER SHEET
- C-2 DEMOLITION PLAN
- C-3 SITE PLAN
- C-4 GRADING, DRAINAGE & UTILITIES PLAN
- C-5 LIGHTING PLAN
- L-1 LANDSCAPE PLAN

ALAN KLEIN, P.E., STRUCTURAL ENGINEER
1045 ROUTE 130, SUITE 200, FAIR HAVEN, NJ 07024
PHONE: 908.852.2000 FAX: 908.852.2002
WWW.AKENGINEERING.COM
OMICK, INC., MECHANICAL & ELECTRICAL ENGINEERS
1000 ROUTE 130, SUITE 200, FAIR HAVEN, NJ 07024
PHONE: 908.852.2000 FAX: 908.852.2002
WWW.OMICK.COM
FRANK P. LEMIA ASSOCIATES, SITE DEVELOPMENT ENGINEER
1000 ROUTE 130, SUITE 200, FAIR HAVEN, NJ 07024
PHONE: 908.852.2000 FAX: 908.852.2002
WWW.FPAENGINEERING.COM



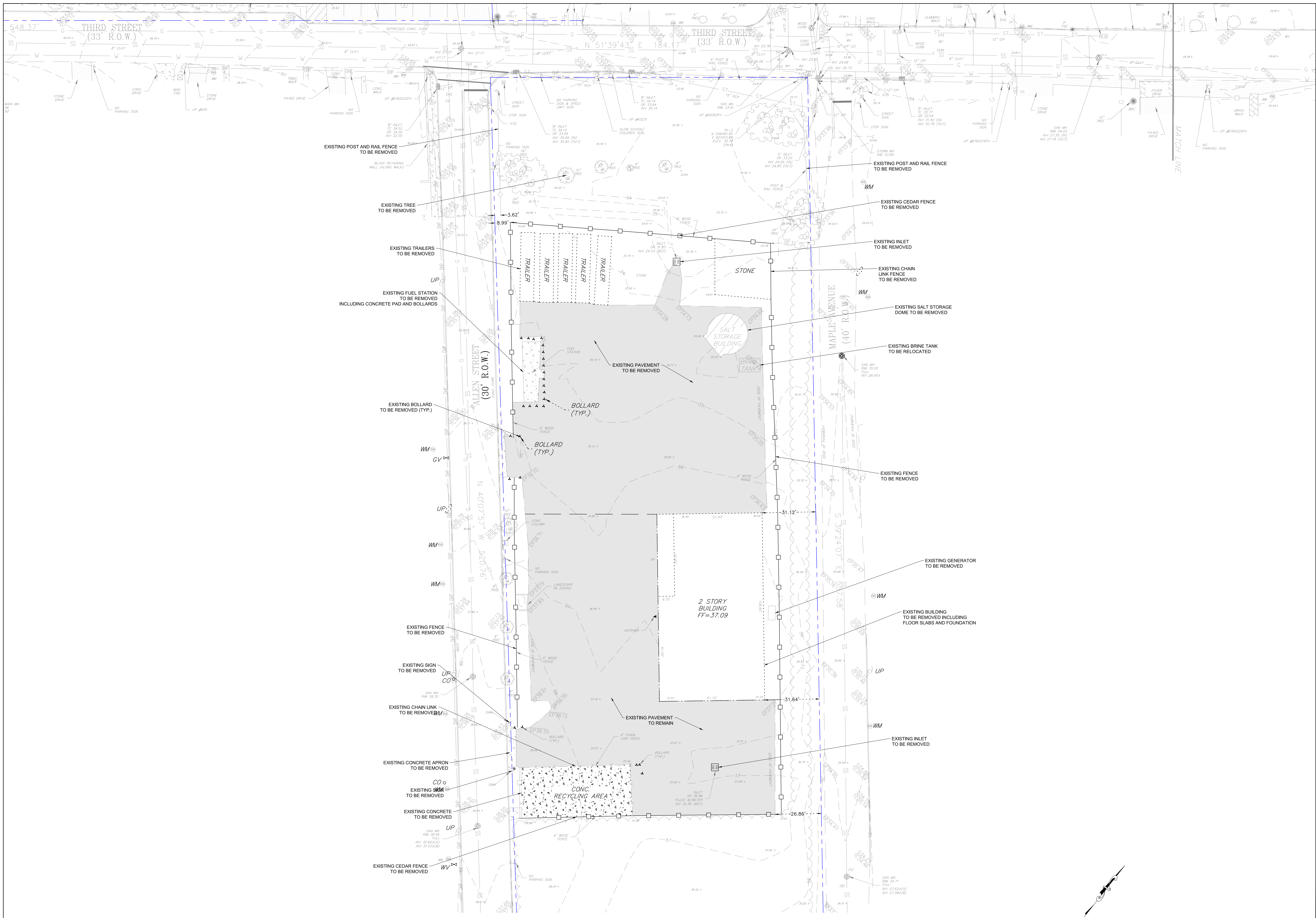
**THE GOLDSTEIN PARTNERSHIP
ARCHITECTS**
515 VALLEY STREET, SUITE 110, MAPLEWOOD, NJ 07040
OFFICE: 973.761.4550
www.goldsteinpartnership.com
copyright © 2021 BY THE GOLDSTEIN PARTNERSHIP. ALL RIGHTS RESERVED.

**NEW PUBLIC WORKS BUILDING
BOROUGH OF FAIR HAVEN**
BLOCK 44 LOT 2
1 ALLEN STREET
FAIR HAVEN, NJ 07024

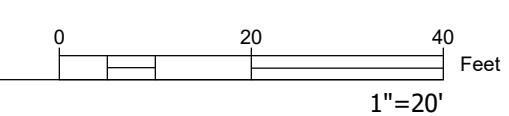
COVER SHEET
SCALE AS NOTED
DATE: 01/20/21
4/4/21

THIS DRAWING IS
INCOMPLETE UNLESS
USED WITH ALL OTHER
CONTRACT DOCUMENTS.

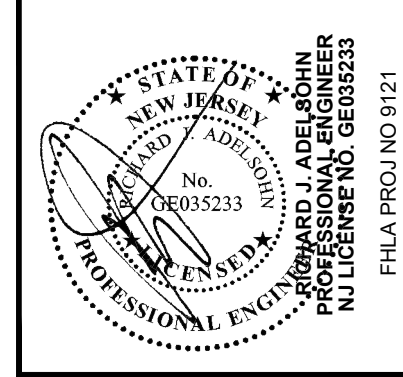
DRAWING NUMBER
C-1
SHEET 1 OF 6



1 DEMOLITION PLAN



ALAN KLEIN, P.E. STRUCTURAL ENGINEER
 10410 ROUTE 100, SUITE 200
 FREEHOLD, NJ 07728
 (732) 391-1100
 OMICK, INC. MECHANICAL & ELECTRICAL ENGINEERS
 2500 ROUTE 100, SUITE 200
 FREEHOLD, NJ 07728
 (732) 391-1100
 FRANK J. LEMAS ARCHITECTS, INC. ARCHITECTURAL ENGINEER
 105 SOUTH STREET, SUITE 200
 FREEHOLD, NJ 07728
 (732) 391-1100



THE GOLDSTEIN PARTNERSHIP
 ARCHITECTS
 515 VALLEY STREET, SUITE 110, MAPLEWOOD, NJ 07040
 (973) 781-4550
 WWW.GOLDSTEINARCHITECTS.COM
 COPYRIGHT © 2021 BY THE GOLDSTEIN PARTNERSHIP, ALL RIGHTS RESERVED.

NEW PUBLIC WORKS BUILDING
BOROUGH OF FAIR HAVEN
 BLOCK 44 LOT 2
 1 ALLEN STREET
 FAIR HAVEN, NJ 07704

DEMOLITION PLAN
 SCALE AS NOTED
 DATE: 01/20/21
 DWG. LTB
 CKD. EJA

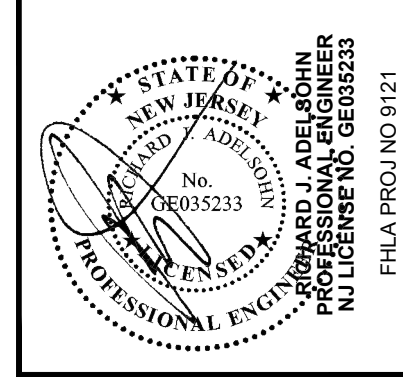
THIS DRAWING IS INCOMPLETE UNLESS USED WITH ALL OTHER CONTRACT DOCUMENTS.

DRAWING NUMBER
C-2
 SHEET 2 OF 6



1 SITE PLAN

ALAN KLEIN, P.E. STRUCTURAL ENGINEER
 10411 BELLEVILLE ROAD, SUITE 100
 HIGHTSTOWN, NJ 08520
 (609) 426-1100
 OMBUD, INC. MECHANICAL & ELECTRICAL ENGINEERS
 2501 W. STATE STREET, SUITE 200
 FREEHOLD, NJ 07728
 (732) 841-1100
 FRANK P. LEMIA ASSOCIATES, SITE/CIVIL/UTILITY ENGINEER
 105 HUNTERS LANE, SUITE 100
 FREEHOLD, NJ 07728
 (732) 841-1100



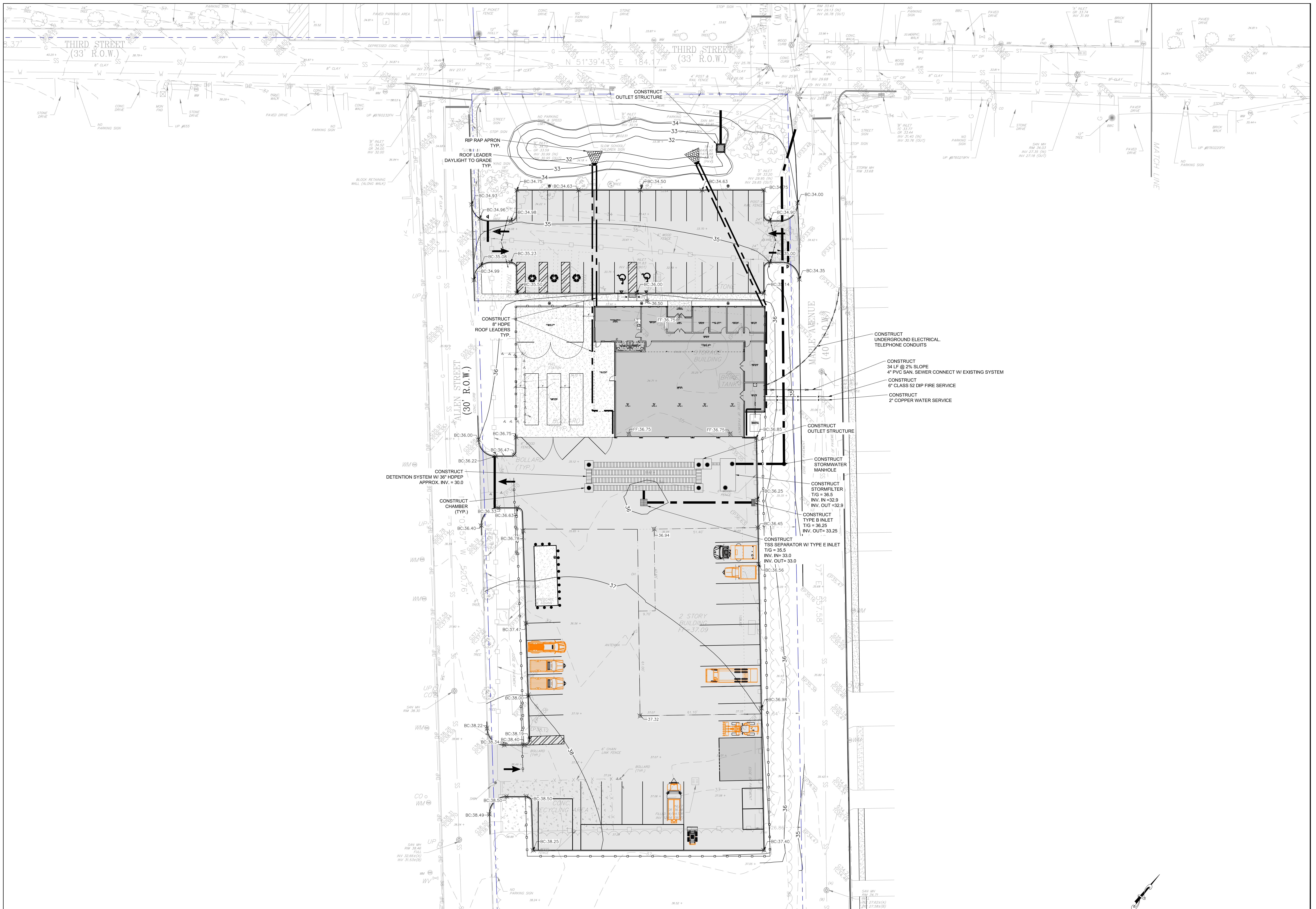
THE GOLDSTEIN PARTNERSHIP
 ARCHITECTS
 515 VALLEY STREET, SUITE 110, MAPLEWOOD, NJ 07040
 (973) 781-4550
 www.goldsteinpartnership.com
 copyright © 2021 BY THE GOLDSTEIN PARTNERSHIP, ALL RIGHTS RESERVED.

NEW PUBLIC WORKS BUILDING
BOROUGH OF FAIR HAVEN
 BLOCK 44 LOT 2
 1 ALLEN STREET
 FAIR HAVEN, NJ 07704

SITE PLAN
 SCALE AS NOTED
 DATE: 01/2021
 4/14/21

THIS DRAWING IS
 INCOMPLETE UNLESS
 USED WITH ALL OTHER
 CONTRACT DOCUMENTS.

DRAWN BY
 CMC: EJA
 DRAWING NUMBER
C-3
 SHEET 3 OF 6



1 GRADING, DRAINAGE & UTILITES PLAN

ALAN KLEIN, P.E. STRUCTURAL ENGINEER
 1000 W. 10TH STREET, SUITE 200
 NEW BRUNSWICK, NJ 08901
 (732) 839-1100
 OMER, INC. MECHANICAL & ELECTRICAL ENGINEER
 2500 W. 10TH STREET, SUITE 200
 NEW BRUNSWICK, NJ 08901
 (732) 839-1100
 FRANK P. LEMMA ASSOCIATES, P.C. CIVIL & UTILITY ENGINEER
 1000 W. 10TH STREET, SUITE 200
 NEW BRUNSWICK, NJ 08901
 (732) 839-1100



THE GOLDSTEIN PARTNERSHIP
 ARCHITECTS
 515 VALLEY STREET, SUITE 110, MAPLEWOOD, NJ 07040
 www.goldsteinpartnership.com
 Copyright © 2021 by THE GOLDSTEIN PARTNERSHIP, ALL RIGHTS RESERVED.

NEW PUBLIC WORKS BUILDING
BOROUGH OF FAIR HAVEN
 BLOCK 44 LOT 2
 1 ALLEN STREET
 FAIR HAVEN, NJ 07704

GRADING, DRAINAGE & UTILITIES PLAN
 DWN: LTB
 CKD: EJA
 SCALE: AS NOTED
 DATE: 9/1/2021
 4/4/21

THIS DRAWING IS INCOMPLETE UNLESS USED WITH ALL OTHER CONTRACT DOCUMENTS.

DRAWING NUMBER
C-4
 SHEET 4 OF 6

Symbol	Label	Image	QTY	Manufacturer	Catalog Number	Description	Lamp	Number Lamps	Filename	Lumens per Lamp	Lumen Multiple	LLF	Wattage	Efficiency
⬆	A		7	SIGNIFY CANADA LTD	P15-P-A01-730-T45	Pureform Area Small 15" Square, 32 LED's, 3000K CCT, TYPE T45 OPTIC.	(2) LED ARRAY(S) DRIVEN AT 200mA	1	p15-p-a01-730-t45.us	2046	1	1	14.3	100%
⬆	B		3	COOPER LIGHTING SOLUTIONS - INVIE (FORMERLY EATON)	ENT-SA1A-735-U-SL4-HS	ENTRI LED LUMINAIRE (1) 70 CRI, 3500K, 300mA LIGHTSQUARE WITH 16 LEADS AND TYPE IV SPILL LIGHT ELIMINATOR OPTICS WITH HOUSE SIDE SHIELD		16	ENT-SA1A-735-U-SL4-HS.us	131	1	1	20.1	100%
⬆	D		3	COOPER LIGHTING SOLUTIONS - INVIE (FORMERLY EATON)	ENV-SA1F-735-U-T4FT	ENTRI LED LUMINAIRE (1) 70 CRI, 3500K, 300mA LIGHTSQUARE WITH 16 LEADS AND TYPE IV FORWARD THROW OPTICS		16	ENV-SA1F-735-U-T4FT.us	438	1	1	66.1	100%

Statistics						
Description	Symbol	Avg	Max	Min	Max/Min	Avg/Min
DPW Yard	+	0.5 ft	2.8 ft	0.0 ft	N/A	N/A
Recycling Area	+	1.0 ft	3.5 ft	0.0 ft	N/A	N/A
Visitor Parking	+	0.7 ft	1.5 ft	0.2 ft	7.5:1	3.5:1

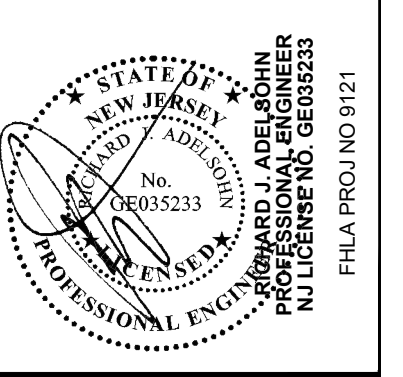


"A" SIGNIFY P15
Scale: N.T.S.



"B" AND "D" COOPER ENV ENTRI ROUND
Scale: N.T.S.

ALAN KLEIN, P.E. STRUCTURAL ENGINEER
1000 WASHINGTON ST. SUITE 200
FAIR HAVEN, NJ 07033-2000
PHONE: 908.855.0070 FAX: 908.855.0070
WWW.KLEINENGINEERING.COM
ONKOR, INC. MECHANICAL & ELECTRICAL ENGINEER
1000 WASHINGTON ST. SUITE 200
FAIR HAVEN, NJ 07033-2000
PHONE: 908.855.0070 FAX: 908.855.0070
WWW.ONKORINC.COM
FRANK P. LEMMA ASSOCIATES, INC. MECHANICAL & ELECTRICAL ENGINEER
1000 WASHINGTON ST. SUITE 200
FAIR HAVEN, NJ 07033-2000
PHONE: 908.855.0070 FAX: 908.855.0070
WWW.FPLEMA.COM



THE GOLDSTEIN PARTNERSHIP
ARCHITECTS
515 VALLEY STREET, SUITE 110, MAPLEWOOD, NJ 07040
OFF: 973.761.4550
WWW.GOLDSTEINARCHITECTS.COM
COPYRIGHT © 2021 BY THE GOLDSTEIN PARTNERSHIP, ALL RIGHTS RESERVED.

NEW PUBLIC WORKS BUILDING
BOROUGH OF FAIR HAVEN
BLOCK 44 LOT 2
1 ALLEN STREET
FAIR HAVEN, NJ 07034

LIGHTING PLAN
SCALE AS NOTED
DATE: 01/20/21
4/14/21
DWG: LTB
CHK: EJA

THIS DRAWING IS INCOMPLETE UNLESS USED WITH ALL OTHER CONTRACT DOCUMENTS.

DRAWING NUMBER
C-5
SHEET 5 OF 6



1 SITE PLAN

ALL DIMENSIONS UNLESS OTHERWISE NOTED
 ALL DIMENSIONS ARE IN FEET AND DECIMALS THEREOF
 CONSTRUCTION SHALL BE IN ACCORDANCE WITH THE LATEST EDITIONS OF THE INTERNATIONAL BUILDING CODE (IBC) AND THE INTERNATIONAL PLUMBING CODE (IPC)
 CONSULT THE APPROPRIATE AGENCIES FOR ALL PERMITS AND REGULATIONS
 PERMANENT RECORD SETTING AND SURVEYING
 PERMANENT RECORD SETTING AND SURVEYING
 PERMANENT RECORD SETTING AND SURVEYING

ROBERT A. JACOBSON
 PROFESSIONAL ENGINEER
 LICENSE NO. 12121
 PAUL PROUDLO 12121

THE GOLDSTEIN PARTNERSHIP
ARCHITECTS
 515 VALLEY STREET, SUITE 110, MAPLEWOOD, NJ 07040
 WWW.GOLDSTEINPARTNERSHIP.COM
 TEL: 973.761.4450
 COPYRIGHT © 2011 BY THE GOLDSTEIN PARTNERSHIP, ALL RIGHTS RESERVED.

NEW PUBLIC WORKS BUILDING
BOROUGH OF FAIR HAVEN
 BLOCK 44 LOT 2
 1 ALLEN STREET
 FAIR HAVEN, NJ 07704

LANDSCAPE PLAN
 SCALE AS NOTED
 DATE: 4/14/21
 DWG: LTB
 CDR: JCA

THIS DRAWING IS INCOMPLETE UNLESS USED WITH ALL OTHER CONTRACT DOCUMENTS.

DRAWING NUMBER
L-1
 SHEET 3 OF 6