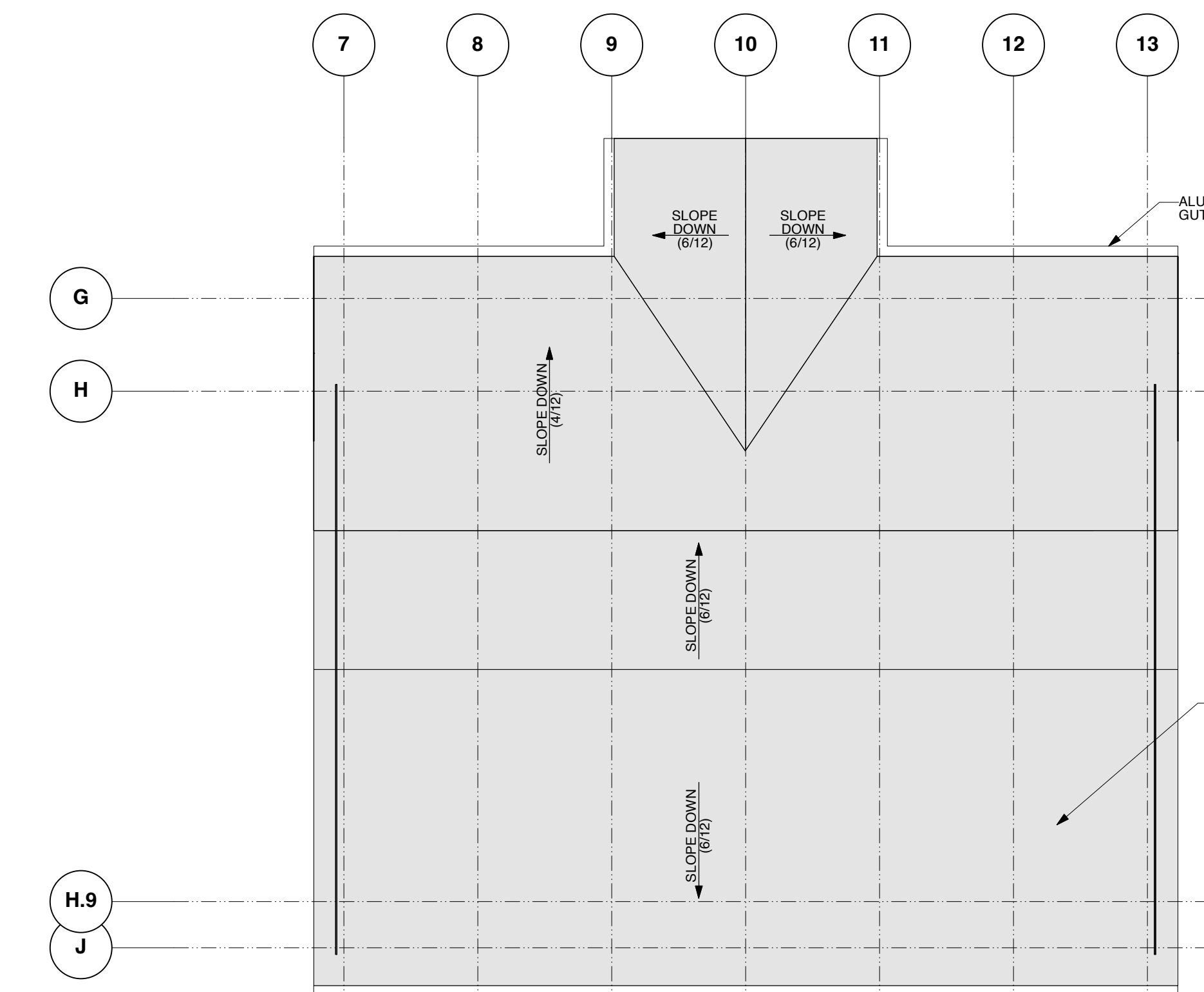
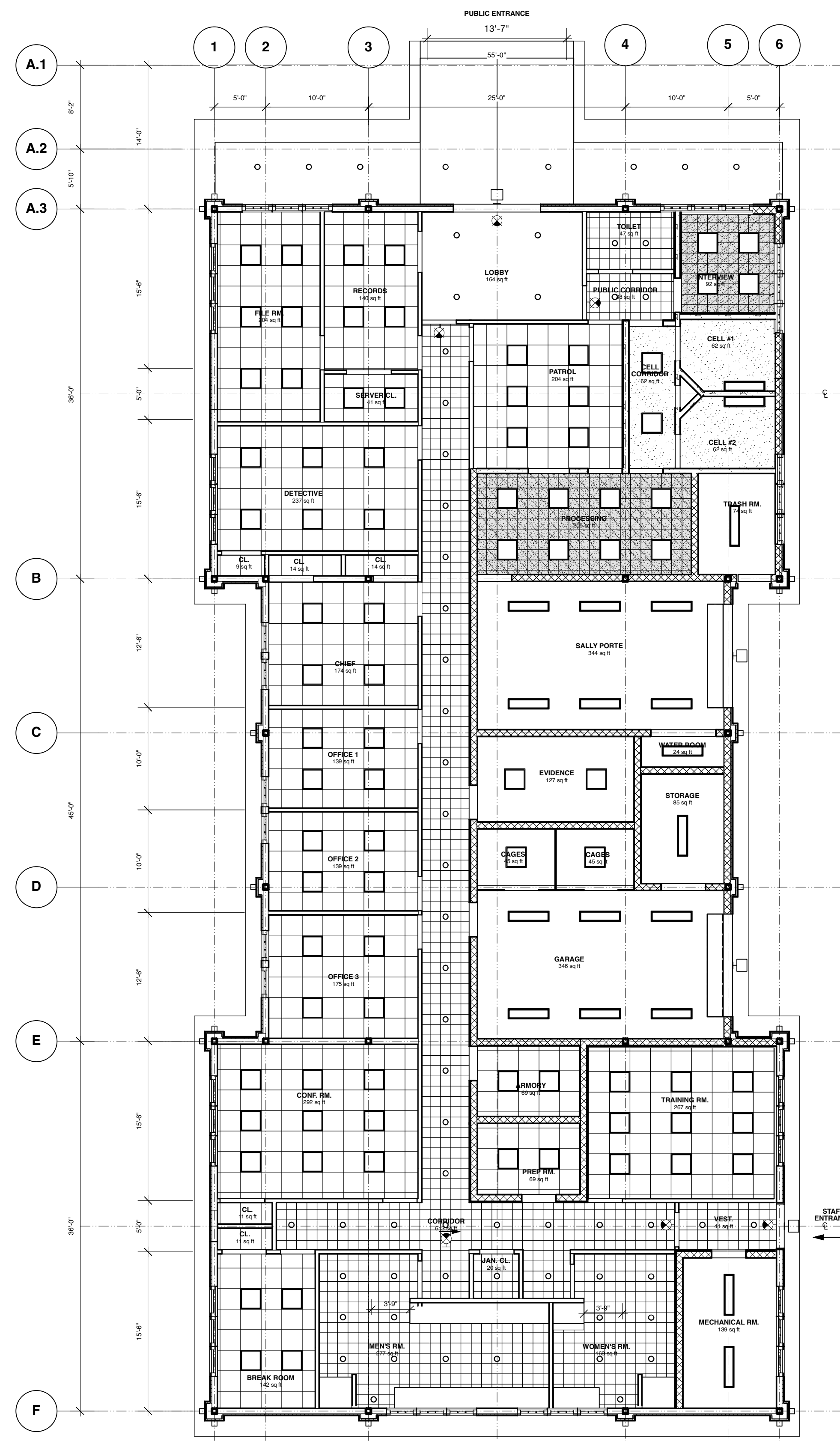


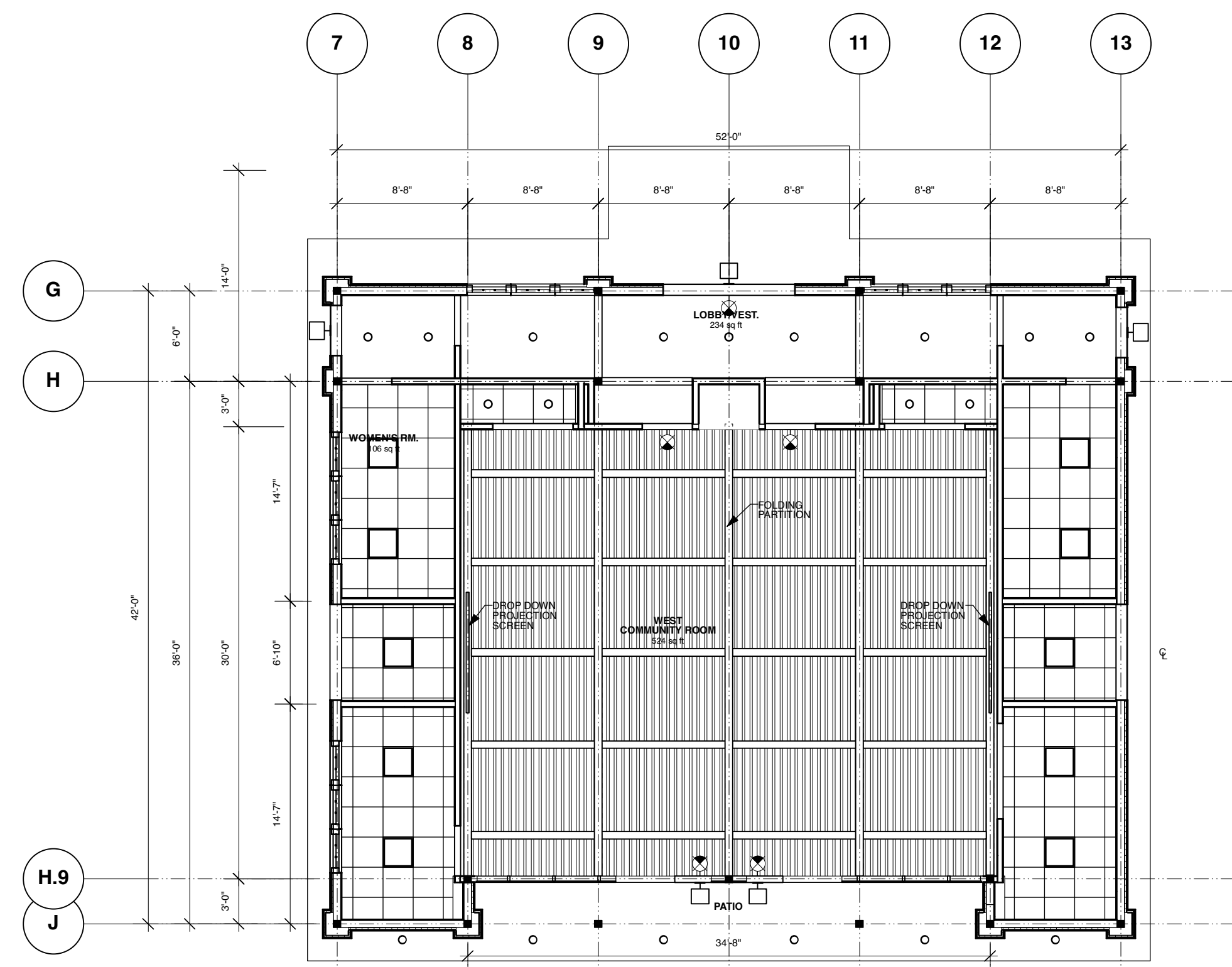
205 POLICE BUILDING ROOF PLAN
Scale: 1/8" = 1'-0"



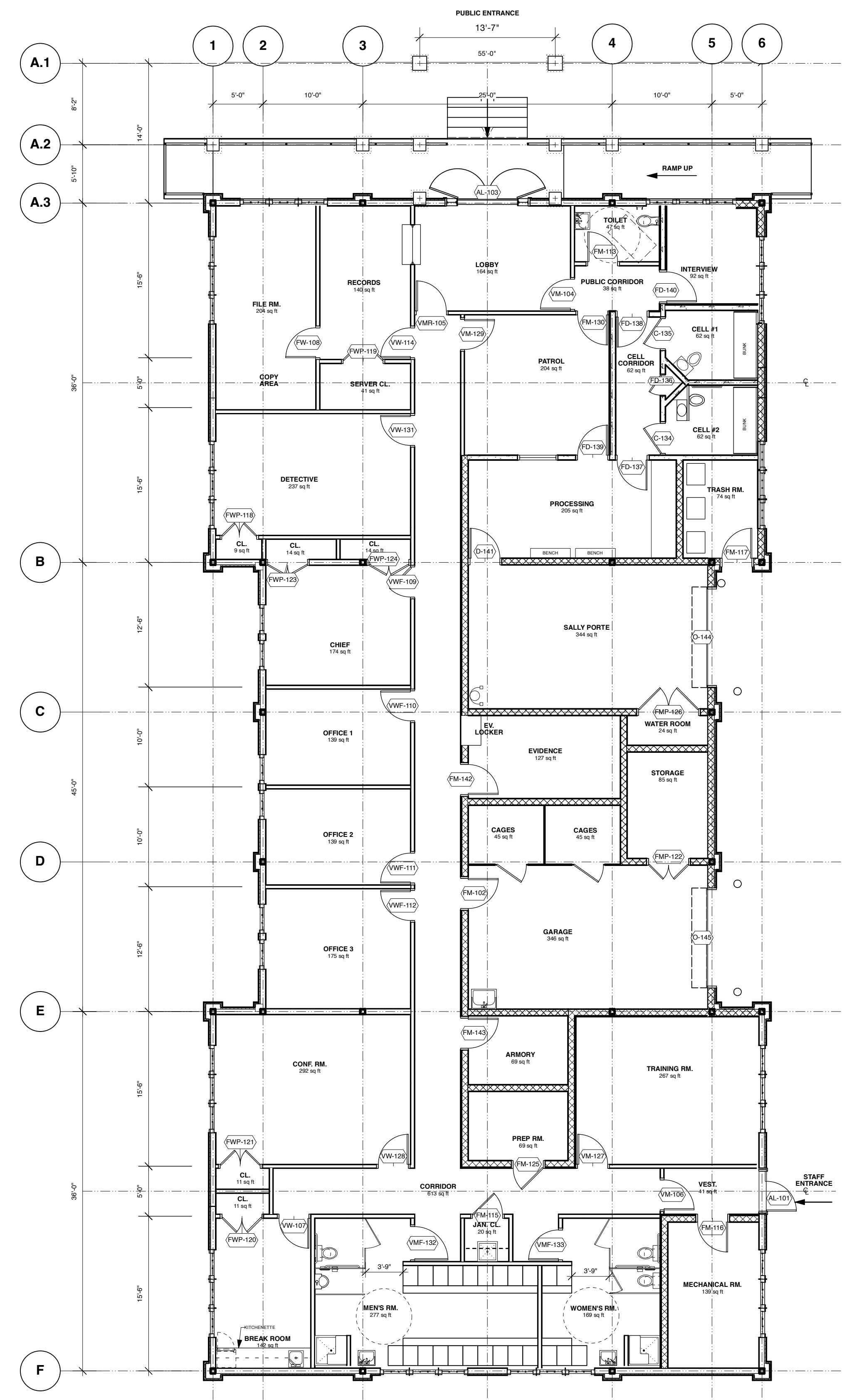
206 COMMUNITY CENTER ROOF PLAN
Scale: 1/8" = 1'-0"



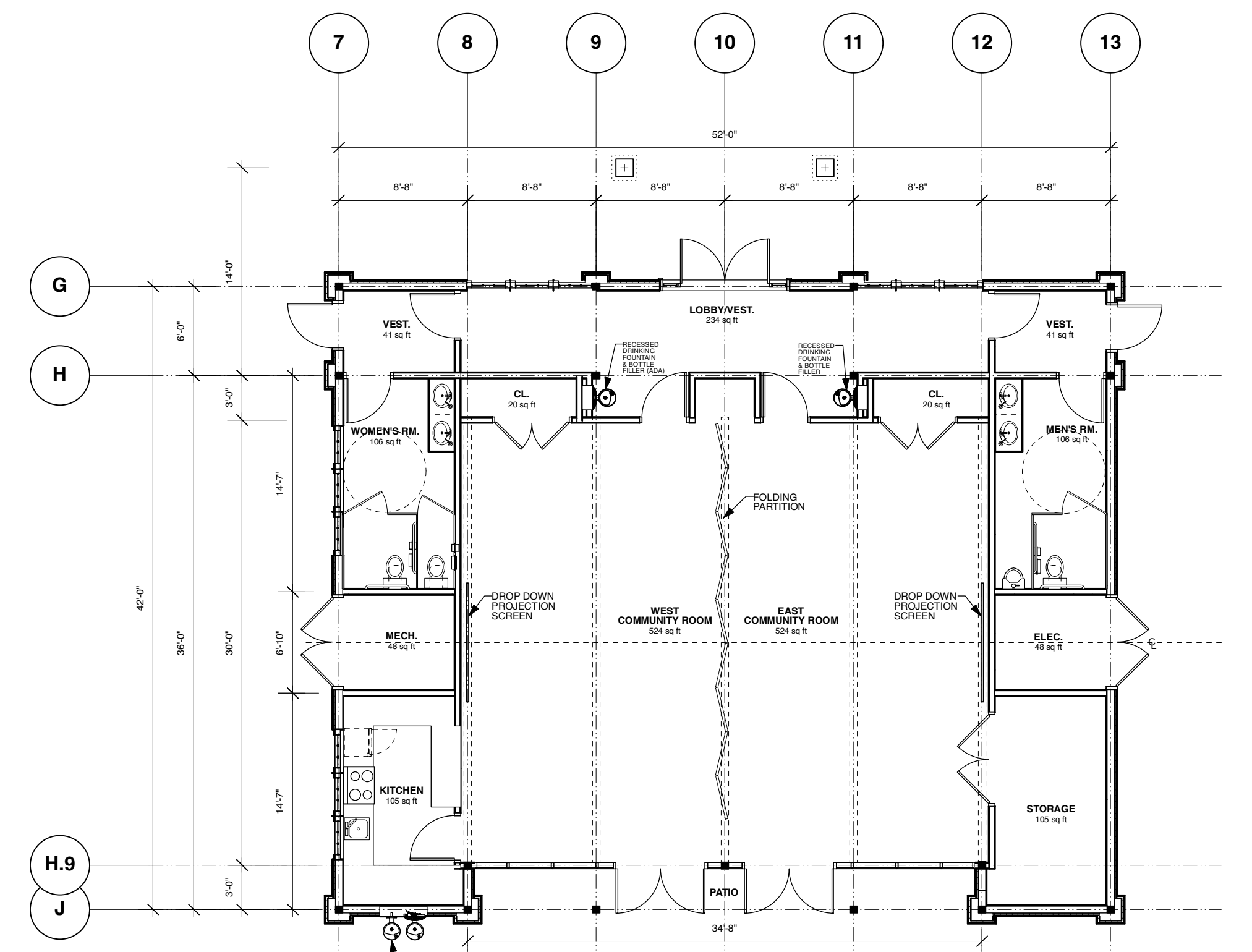
202 POLICE BUILDING REFLECTED CEILING PLAN
Scale: 1/8" = 1'-0"



204 COMMUNITY CENTER REFLECTED CEILING PLAN
Scale: 1/8" = 1'-0"



201 POLICE BUILDING PLAN
Scale: 1/8" = 1'-0"



203 COMMUNITY CENTER PLAN
Scale: 1/8" = 1'-0"

ALLAN KIMBLE, INC. STRUCTURAL ENGINEERS
100 ROUTE 67 WEST, SUITE 200
FAIR HAVEN, NJ 07704
TEL: 973-751-4550
FAX: 973-751-4550

OMEX, INC. MECHANICAL & ELECTRICAL ENGINEERS
100 ROUTE 67 WEST, SUITE 200
FAIR HAVEN, NJ 07704
TEL: 973-751-4550
FAX: 973-751-4550

FRANK N. LEHR ASSOCIATES, LLC ARCHITECTS
100 ROUTE 67 WEST, SUITE 200
FAIR HAVEN, NJ 07704
TEL: 973-751-4550
FAX: 973-751-4550

LOUIS CONNORS ENGINEERING, TECHNICAL CONSULTANTS
100 ROUTE 67 WEST, SUITE 200
FAIR HAVEN, NJ 07704
TEL: 973-751-4550
FAX: 973-751-4550

ELIOT WARREN GOLDSTEIN, AIA
NJ LICENSE #B13

THE GOLDSTEIN PARTNERSHIP
ARCHITECTS
515 VALLEY STREET SUITE 110, MAPLEWOOD, NJ 07040
OFC: 973-751-4550
WWW.THEGOLDSTEINPARTNERSHIP.COM
COPYRIGHT © 2003 BY THE GOLDSTEIN PARTNERSHIP. ALL RIGHTS RESERVED.

FAIR HAVEN MUNICIPAL BUILDINGS
BOROUGH OF FAIR HAVEN
POLICE BUILDING
FAIR HAVEN, NJ 07704

FLOOR PLANS & CEILING PLANS
REFLECTED CEILING PLANS
SCALE: AS NOTED
DATE: 03/24/03
DWG. NO.
CNU: EWG

THIS DRAWING IS INCOMPLETE UNLESS USED WITH ALL OTHER CONTRACT DOCUMENTS.

DRAWING NUMBER
A-2
SHEET OF 100