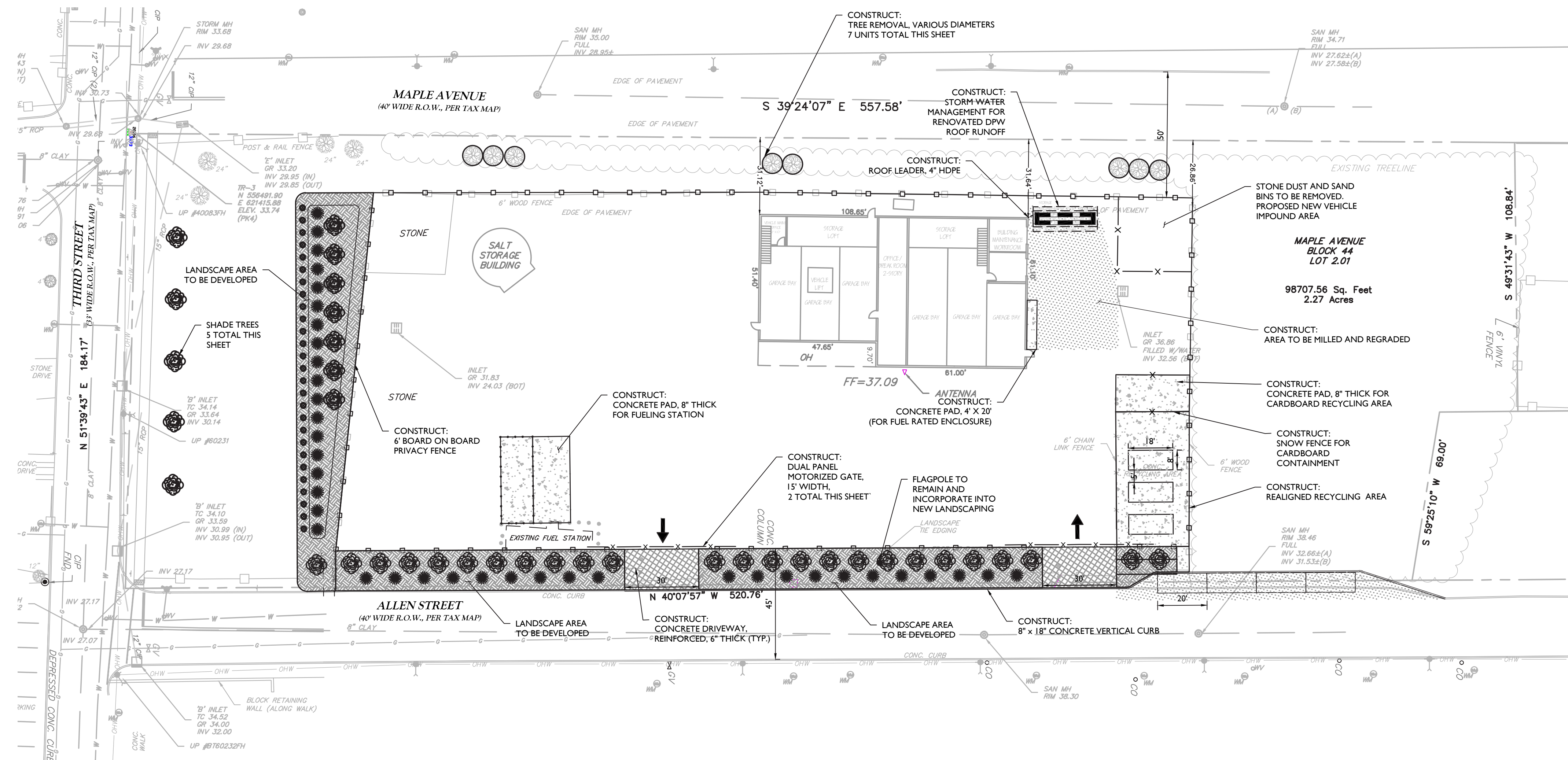


# These are two conceptual site plans for the Department of Public Works site.

## Which site plan do you prefer? What would you change?

Place a sticker on your favorite site plan and grab a post-it note to share your ideas for the landscaping buffer and recycling center!

### Option 1:



### Option 2:

Site area for Option 2 is approximately 6,150 square feet smaller than Option 1.

 Area reduced from Option 1

