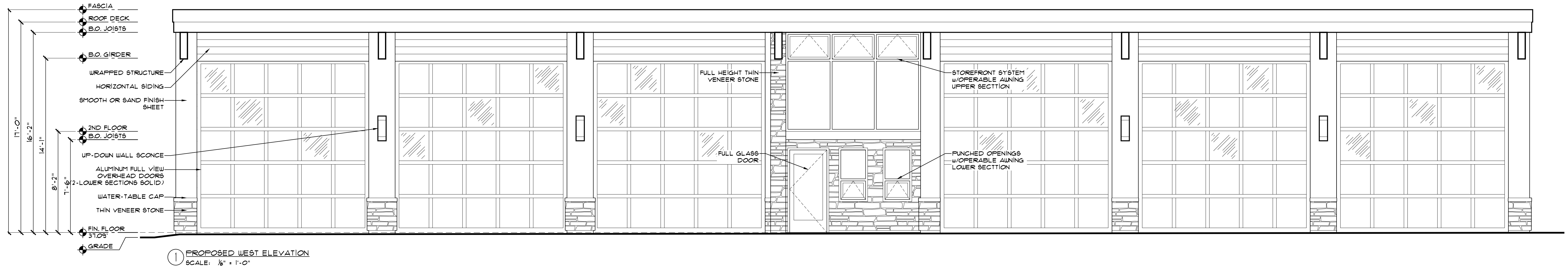


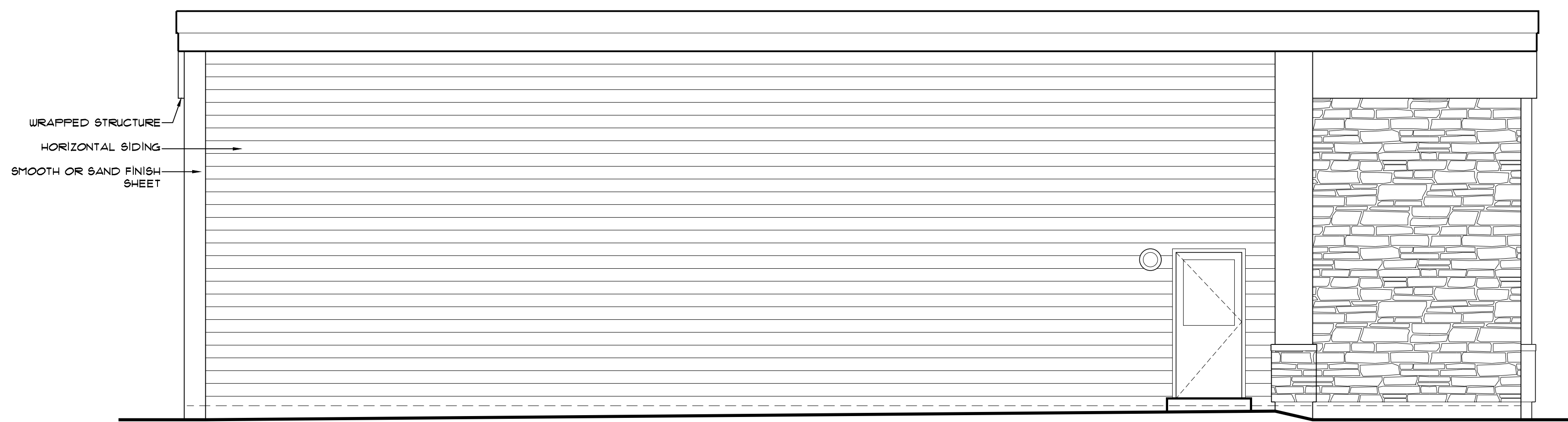
# Conceptual Building Elevations of the Department of Public Works Building

Place a sticker on your favorite building elevation design!

## Option 1: Stone and Horizontal Siding



1 PROPOSED WEST ELEVATION  
SCALE: 1/8" = 1'-0"

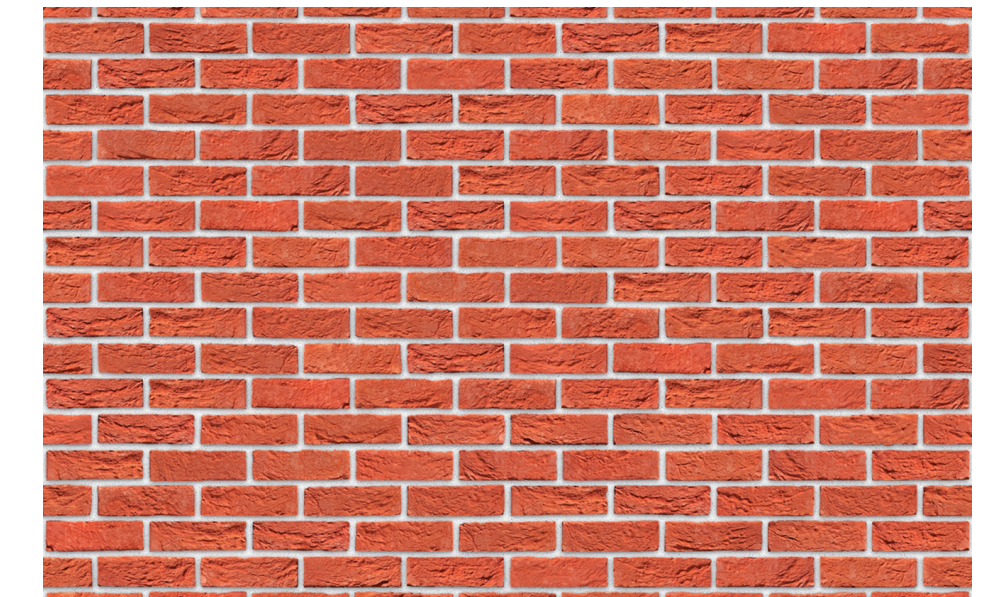


4 PROPOSED NORTH ELEVATION  
SCALE: 1/8" = 1'-0"

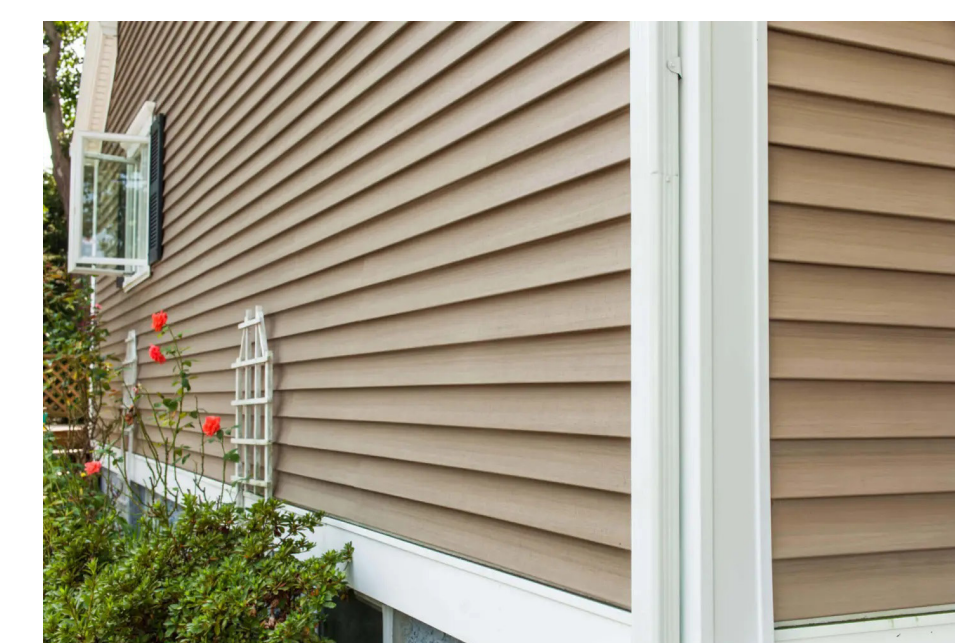
### Material Type Examples:



Stone



Brick

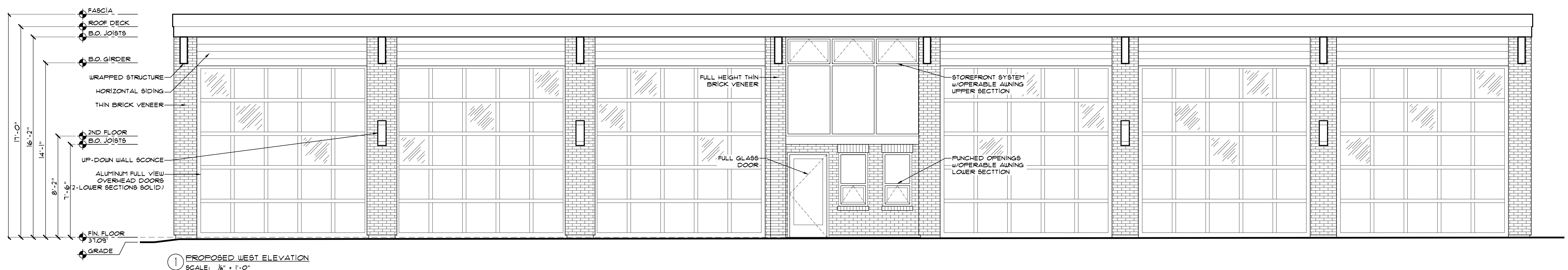


HardiePlank

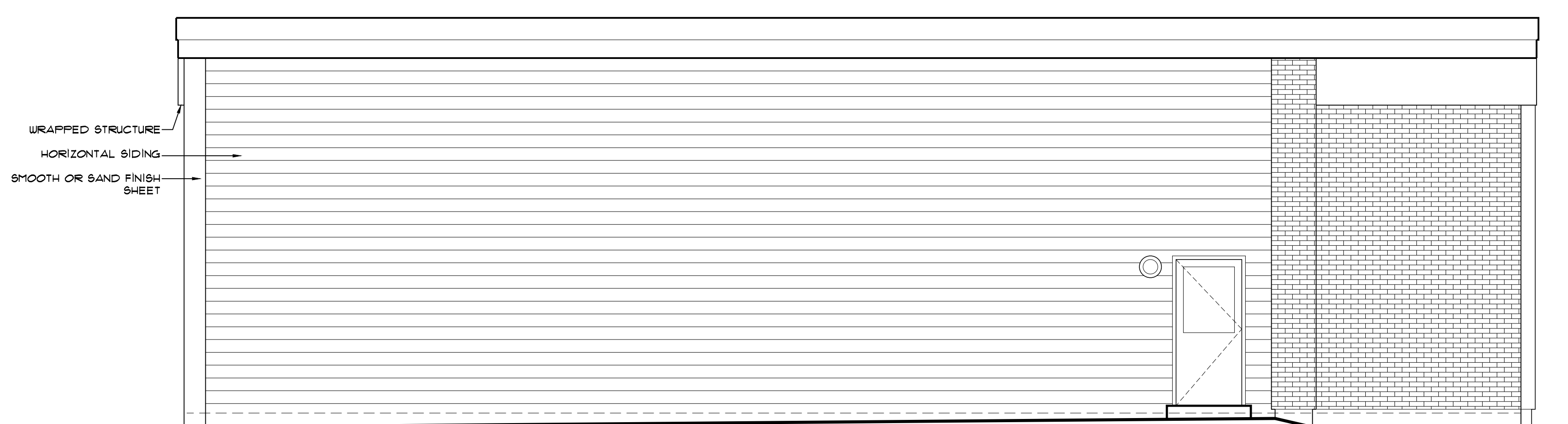


Vinyl

## Option 2: Brick and Horizontal Siding



1 PROPOSED WEST ELEVATION  
SCALE: 1/8" = 1'-0"



4 PROPOSED NORTH ELEVATION  
SCALE: 1/8" = 1'-0"